



Finborough Road, SW10

£575 Per week

A bright and generously proportioned split-level apartment situated within an attractive period conversion. The property features an open-plan kitchen and reception area with impressive high ceilings, along with two double bedrooms and a well-appointed bathroom.

Finborough Road enjoys an excellent position between Old Brompton Road and Fulham Road, offering convenient access to transport links and a wide range of local amenities.

Features

- Period Conversion
- Split Level
- Two Double Bedrooms
- High Ceilings
- Open Plan
- West Brompton

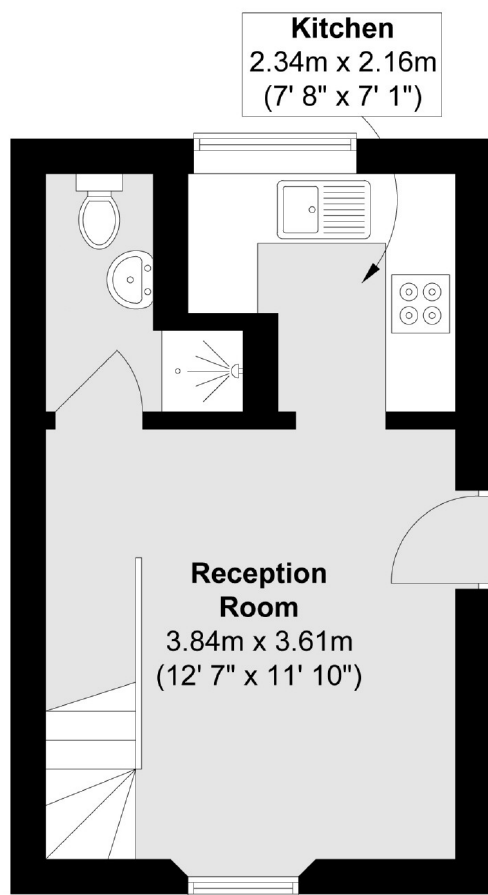


Finborough Road, SW10

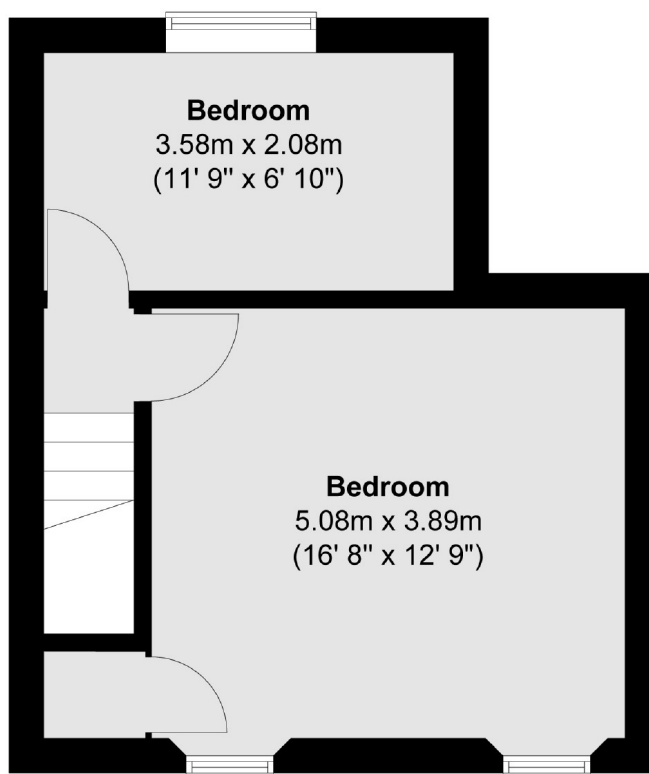


Finborough Road, London, SW10

Ground Floor



First Floor



Total area (approx.) : 49.1 sq. m (529 sq. ft)