



Cornwall Gardens, SW7

£808 Per week

This two bedroom apartment on the top floor of a sought after period conversion offers spacious living for a couple or sharers looking for a property on one of South Kensington's best garden squares.

Cornwall Gardens is a highly desirable garden square road off Gloucester Road, for access to the boutique shops, bars and cafes on offer. Gloucester Road tube station is the closest station.

Features

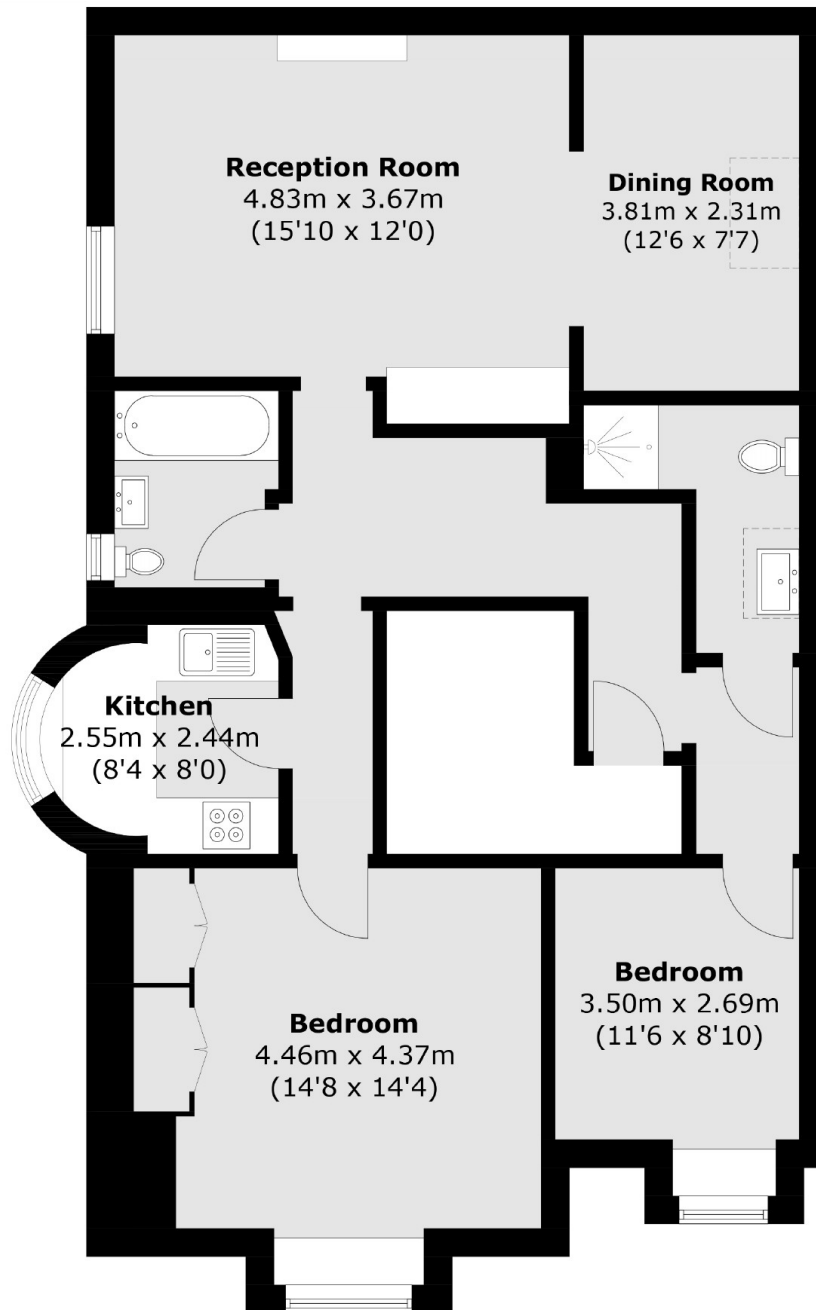
- Two Bedroom
- Two Bathroom
- Top Floor Flat
- Separate Kitchen
- Natural Light Throughout
- Garden Square



Cornwall Gardens, SW7



Cornwall Gardens,
London, SW7



Fourth Floor

Total area (approx.): 84.1 sq. m (905.2 sq. ft)