



Cromwell Road, SW7

£525,000

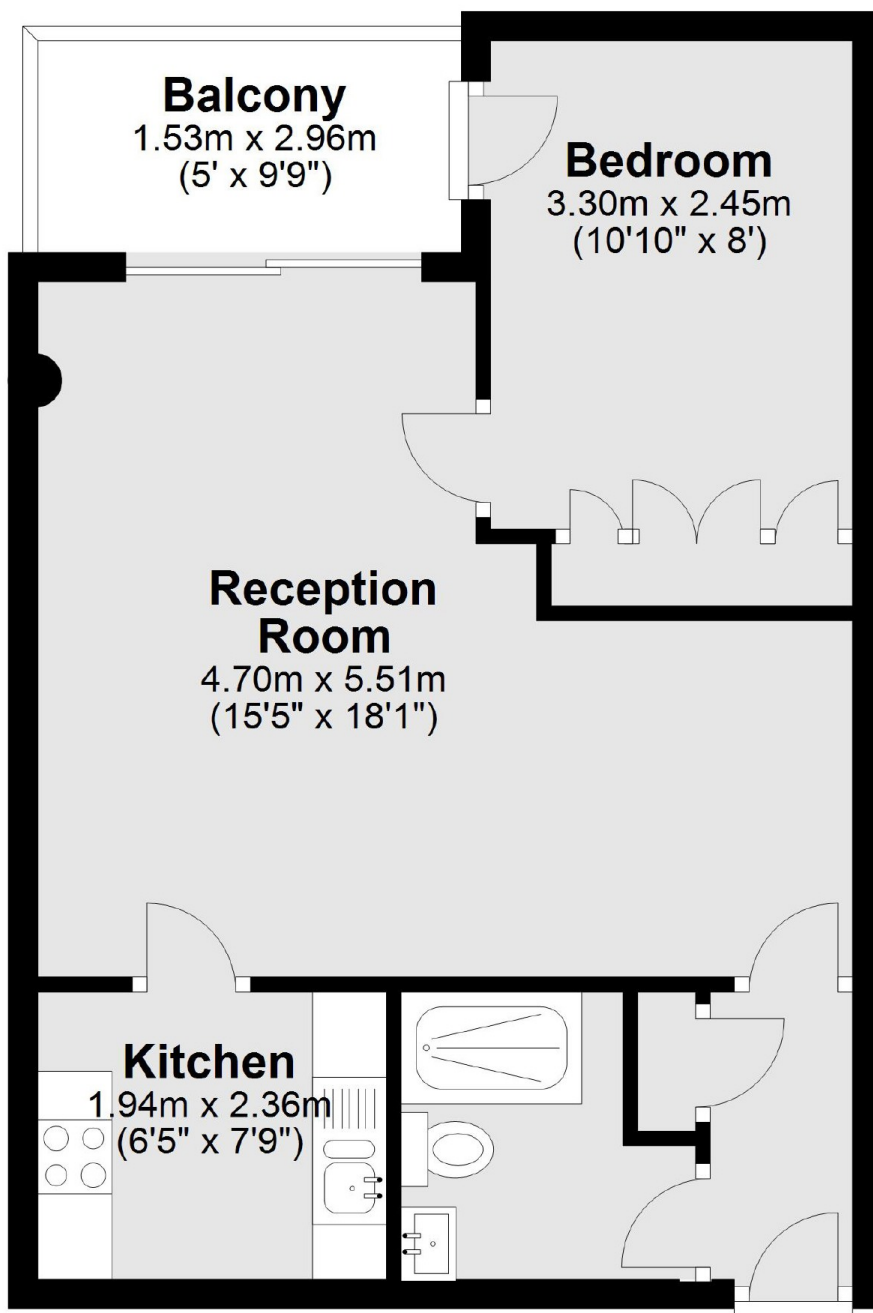
The property has been recently refurbished to a high standard throughout and comprises; master bedroom with built-in wardrobes, modern bathroom and a separate kitchen. The reception room gives direct access to a private balcony.

Point West is conveniently located close to Gloucester Road station with shops such as Waitrose and Sainsbury's, as well as being close to Hyde Park and Kensington High Street.

Features

- One Double Bedroom
- Newly Refurbished
- Separate kitchen
- Large Reception Room
- Private Balcony
- 23 Hour Concierge

Cromwell Road, London, SW7



Total area: approx. 41.2 sq. metres (443.3 sq. feet)