

## Cromwell Road, SW7

£650,000

A unique large one bedroom split level flat entered through the sixth floor entering down to the fifth consisting of an enormous reception room off which there is the kitchen with additional storage room, a bathroom and double bedroom with built in storage.

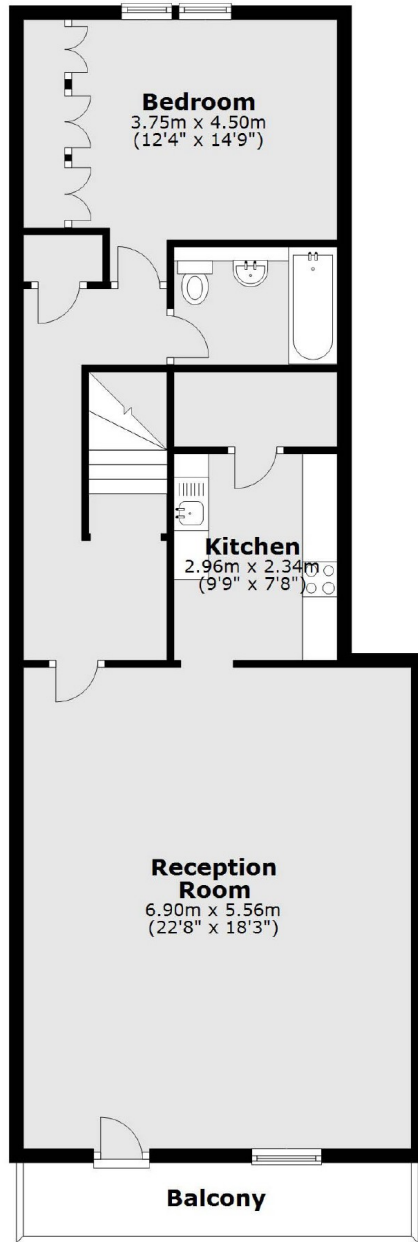
The property is conveniently located close to Gloucester Road station with shops such as Waitrose and Sainsbury's within easy access, as well as being close to Hyde Park.

### Features

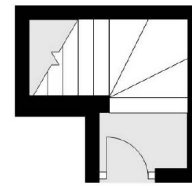
- Unique Large Unit
- Private Balcony
- Large Reception
- Fifth/Sixth Floor
- Lift Access
- 24 Hour Concierge

# Cromwell Road, London, SW7

## Fifth Floor



## Sixth Floor



Total area: approx. 84.0 sq. metres (904.0 sq. feet)