



## Bolton Gardens, SW5

### £1,350,000

An immaculate second floor two bedroom flat. The property has been renovated to an incredible standard and covers a large lateral space with the reception room and the rear and bedrooms at the front of the building.

Bolton Gardens is a prime location within close proximity to Gloucester Road, Earls Court and South Kensington Station as well as all the shops, restaurants and local amenities on offer. Kensington Gardens are also within reach.

### Features

- Share Of Freehold
- Two Bedrooms
- Two Bathrooms
- Immaculate Condition
- Ample Storage
- Offered Chain Free





## Bolton Gardens, SW5

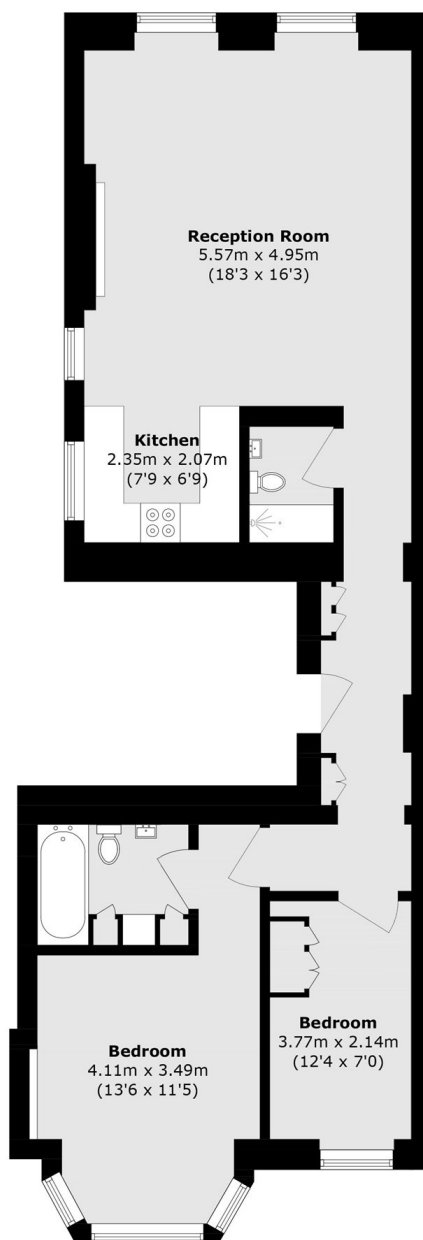
The property consists of a welcoming entrance hallway leading to the large open plan reception room and kitchen with high ceilings and large sash windows flooding the room with natural light. The room features a period fireplace and is large enough for separate reception area, dining space and kitchen.

Off the hallway towards the front consists a family bathroom and two double bedrooms. The principle bedroom benefitting from its own en-suite bathroom. Subject to paying the small annual fee there is access to the communal garden square.





# Bolton Gardens, London, SW5



## Third Floor

Total area (approx.): 72.8 sq. m (783.6 sq. ft)

# Dexters

South Kensington  
144 Old Brompton Road  
London  
SW7 4NR  
Sales  
0207 838 0108

Energy Rating: C. We aim to make our particulars both accurate and reliable. However they are not guaranteed; nor do they form part of an offer or contract. If you require clarification on any points then please contact us, especially if you're traveling some distance to view. Please note that appliances and heating systems have not been tested and therefore no warranties can be given as to their good working order.

 **RICS** | Regulated  
Estate Agent  
and Letting Agent

[dexters.co.uk](https://www.dexters.co.uk)