



**Coleherne Road, SW10**

**£595** Per week

**Dexters**



## Coleherne Road, SW10

A beautifully refurbished flat is now available to let, occupying the second floor of a distinguished Victorian residence. Ideally positioned just off Old Brompton Road and within close proximity to Earls Court Road, the property offers both charm and convenience in a highly sought-after location.

The property is conveniently located close to Earls Court Road, offering a wide selection of shops and cafés, including a 24-hour Tesco supermarket, Marks & Spencer Simply Food, Starbucks, and Wagamama. Earls Court Underground Station is situated within one mile, providing excellent transport connections.

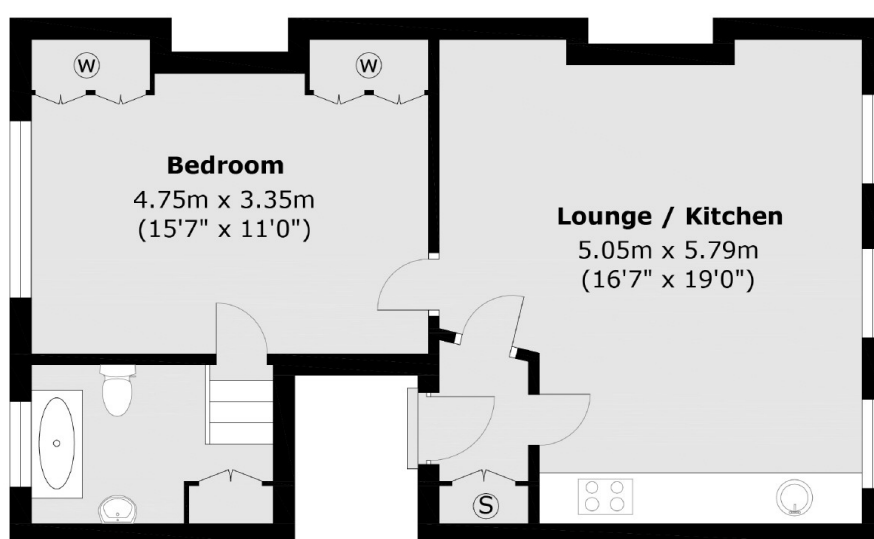
### Features

- Newly Re Painted
- Large Living Room
- Ample Storage
- Large Double Bedroom
- Earls Court Underground
- Open Plan Kitchen





# Coleherne Road, London, SW10



Main area: Approx. 52.1 sq. meters (560.8 sq. feet )