



Coleherne Road, SW10

£595 Per week

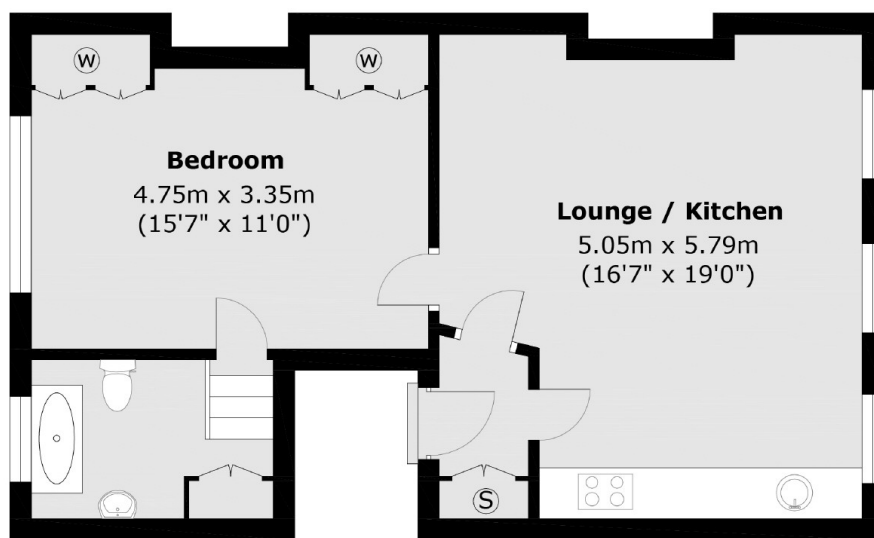
Newly refurbished flat on available to let arranged over the second floor of a Victorian house and located just off Old Brompton Road and close to Earls Court Road.

Close to Earls Court Road with a selection of shops and cafes including 24 hour Tesco supermarket, Marks and Spencer Simply Foods, Starbucks coffee shop and Wagammas restaurant. Earls Court Underground is within a mile.

Features

- Newly Re Painted
- Large Living Room
- Ample Storage
- Large Double Bedroom
- Earls Court Underground
- Open Plan Kitchen

Coleherne Road,
London, SW10



Main area: Approx. 52.1 sq. meters (560.8 sq. feet)

Dexters

South Kensington
144 Old Brompton Road
London
SW7 4NR
Lettings
020 7244 7711

Energy Rating: . We aim to make our particulars both accurate and reliable. However they are not guaranteed; nor do they form part of an offer or contract. If you require clarification on any points then please contact us, especially if you're traveling some distance to view. Please note that appliances and heating systems have not been tested and therefore no warranties can be given as to their good working order.

 **RICS** | Regulated
Estate Agent
and Letting Agent

dexters.co.uk