



Ennismore Gardens, SW7

£2,500 Per week

Dexters



Ennismore Gardens, SW7

This elegant two-bedroom apartment, situated on the first floor of a well-maintained period building, occupies a prime position on one of London's most prestigious garden squares. The property is presented to the market in immaculate condition, having been finished to a luxurious standard throughout.

Ennismore Gardens is a serene, private residents-only square nestled in the heart of Knightsbridge, offering convenient access to South Kensington and Hyde Park. Imperial College London, located on Exhibition Road, and Harrods on Brompton Road are both within easy walking distance. The nearest underground stations are Knightsbridge and South Kensington, providing excellent transport links across the city.

Features

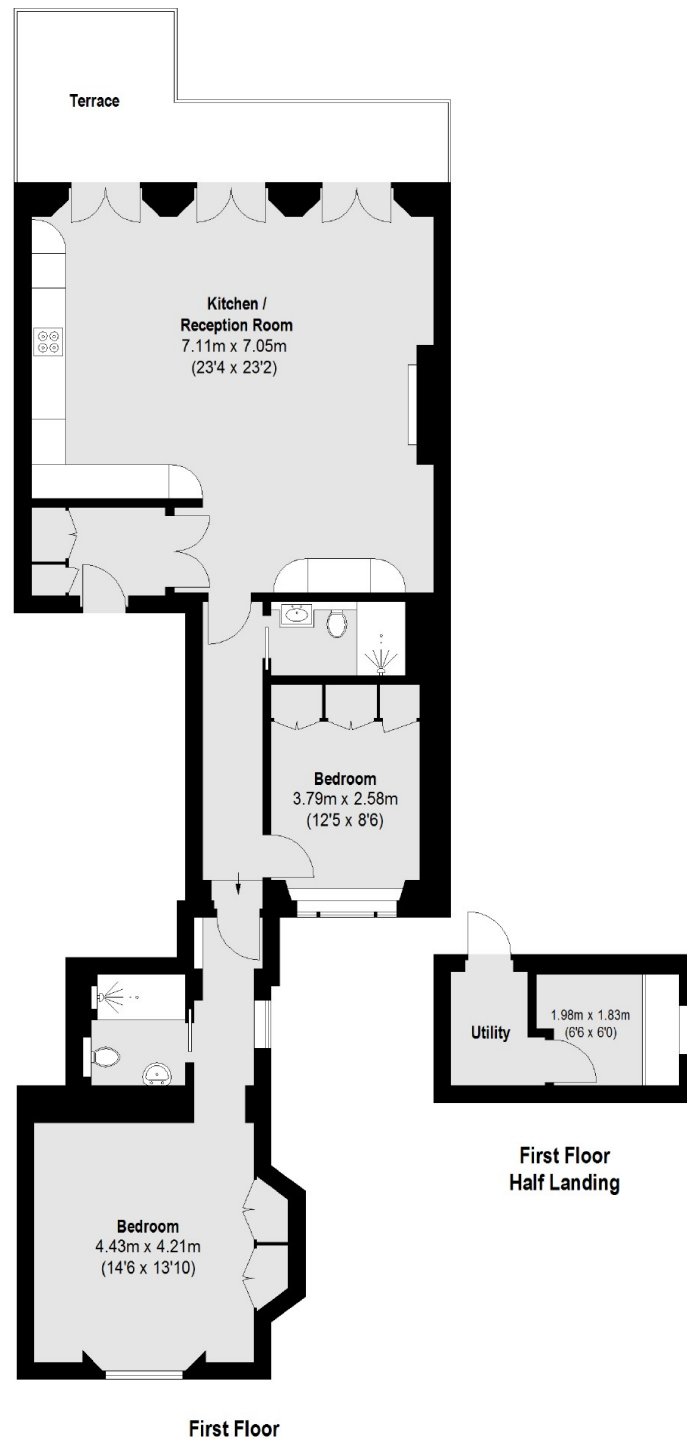
- Two Bedrooms
- Two Bathrooms
- First Floor
- High Ceilings Throughout
- Brand Newly Refurbished
- Overlooking Garden Square







Ennismore Gardens, London, SW7



Total area (approx.): 105.89 sq. m (1140 sq. ft)
Terrace: 14.97 sq. m (161 sq. ft)

Dexters

South Kensington
144 Old Brompton Road
London
SW7 4NR
Lettings
020 7244 7711

Energy Rating: C. We aim to make our particulars both accurate and reliable. However they are not guaranteed; nor do they form part of an offer or contract. If you require clarification on any points then please contact us, especially if you're traveling some distance to view. Please note that appliances and heating systems have not been tested and therefore no warranties can be given as to their good working order.

 **RICS** | Regulated
Estate Agent
and Letting Agent

[dexters.co.uk](https://www.dexters.co.uk)