



## Ifield Road, SW10

### £575,000

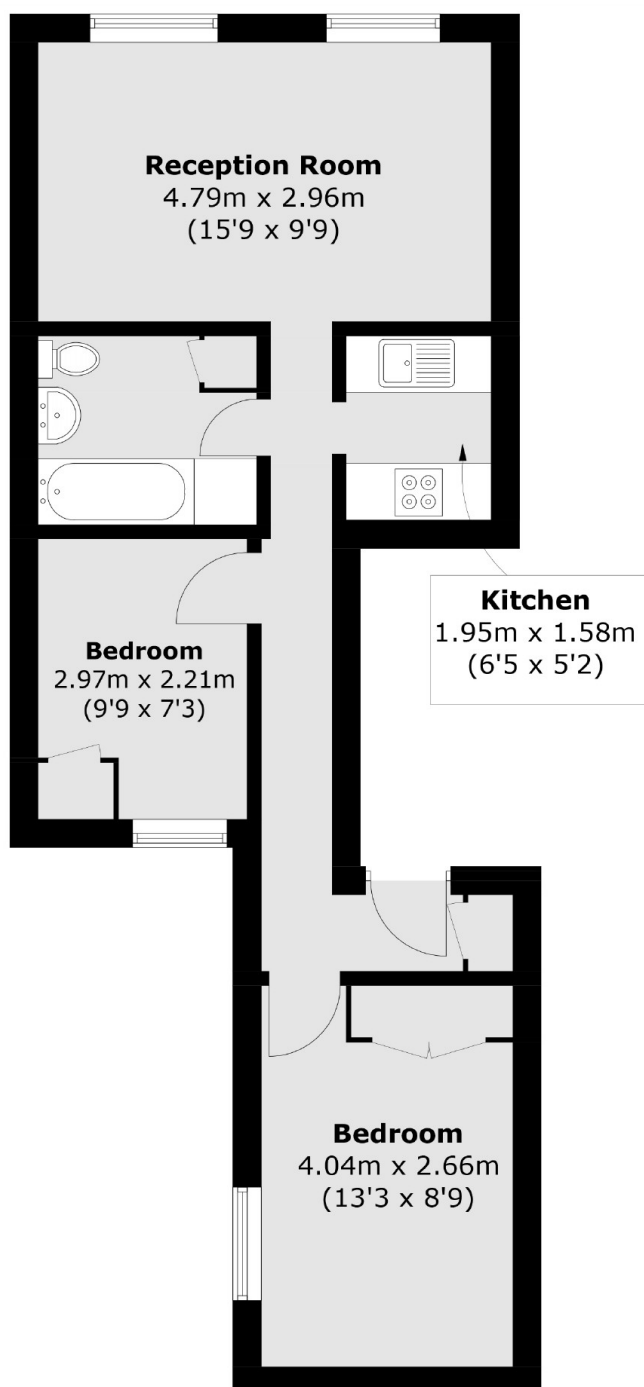
This exceptional two-bedroom apartment is located on the ever-popular Ifield Road, offering a perfect blend of contemporary living and period charm. Set within a well-maintained building in one of West London's most desirable residential streets, the property benefits from spacious interiors, ample natural light, and a stylish finish throughout. Ideal for professionals or couples, this apartment boasts excellent transport links, vibrant local amenities

Located in the Fulham Beach area of Chelsea and Earls Court with a wide choice of shops and cafes including Marks and Spencer simply foods.

### Features

- Two Double Bedrooms
- No Ongoing Chain
- Spacious Living Room
- Separate Kitchen
- Close To Amenities
- Highly Sought After Location

# Ifield Road, London, SW10



Total area (approx.): 48.1 sq. m (517.7 sq. ft)