



Hereford Square, SW7

£1,845 Per week

**Dexters**



## Hereford Square, SW7

A beautifully presented, unfurnished three-bedroom family residence extending to 2,167 sq. Ft. Of versatile living space, perfectly suited to both family life and entertaining.

The home benefits from direct access to a private south-facing terrace and comprises three well-proportioned bedrooms, two bathrooms (including one en suite), a spacious eat-in kitchen, a formal dining/reception room, an additional reception room, a study, utility room, cloakroom, and patio. Further advantages include a private garage and access to a gated shared driveway, ensuring both convenience and security.

Ideally situated in the heart of South Kensington, the property enjoys close proximity to world-renowned museums, a wide range of amenities, boutique shops, acclaimed restaurants, and excellent transport links via South Kensington Underground Station.

### Features

- Three Bedrooms
- House
- South Facing Terrace
- Garage
- Two Reception Rooms
- Large Kitchen Area





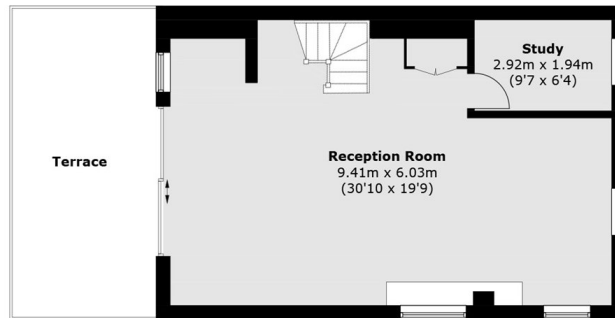




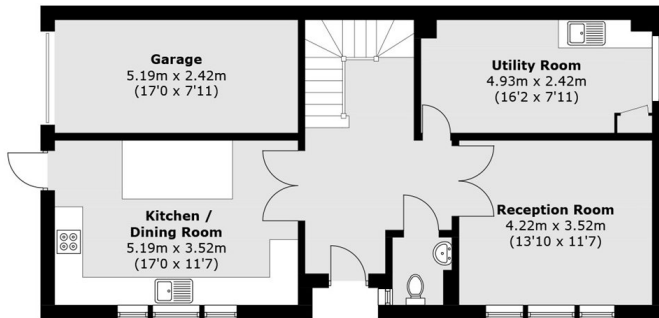




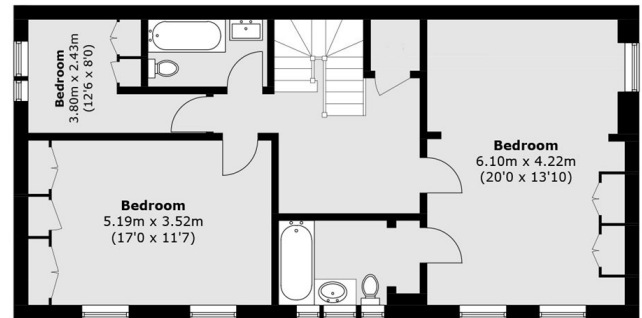
# Hereford Square, London, SW7



**Second Floor**



**Ground Floor**



**First Floor**

Approx Internal Area: 198.2 sq. m (2,133.4 sq. ft)

Garage: 12.5 sq. m (134.5 sq. ft)

Total: 210.7 sq. m (2,267.9 sq. ft)

Terrace: 20.2 sq. m (217.4 sq. ft)