



Queen's Gate Mews, SW7

£2,076 Per week

This distinguished three-bedroom residence, located in one of the most prestigious enclaves of Kensington and Chelsea, has been newly refurbished and meticulously interior designed throughout. The property further benefits from a generously proportioned living area and contemporary finishes, offering both comfort and sophistication.

Ideally situated just off Gloucester Road, the property is within close proximity to a range of well-known high street retailers, including Waitrose. A brief 10-minute walk offers access to additional premium amenities such as Whole Foods Market and Equinox Gym, further enhancing the convenience and lifestyle appeal of this highly desirable location.

Features

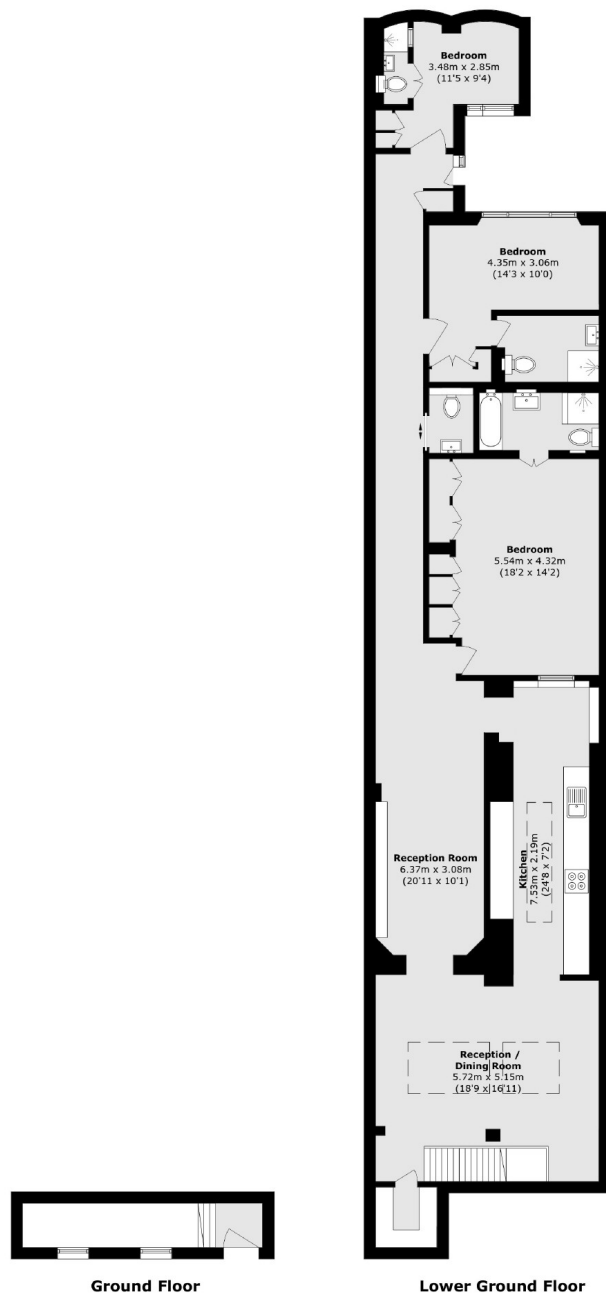
- Three Bedrooms
- Wooden Floors
- Two Entrances
- Modern Finishes
- Large Living Area
- Ample Storage



Queen's Gate Mews, SW7



Queen's Gate Mews, London, SW7



Total area (approx.): 161.0 sq. m (1733.0 sq. ft)

Dexters

South Kensington
144 Old Brompton Road
London
SW7 4NR
Lettings
020 7244 7711

Energy Rating: C. We aim to make our particulars both accurate and reliable. However they are not guaranteed; nor do they form part of an offer or contract. If you require clarification on any points then please contact us, especially if you're traveling some distance to view. Please note that appliances and heating systems have not been tested and therefore no warranties can be given as to their good working order.

 **RICS** | Regulated
Estate Agent
and Letting Agent

[dexters.co.uk](https://www.dexters.co.uk)