



Knightsbridge, SW7

£1,500,000

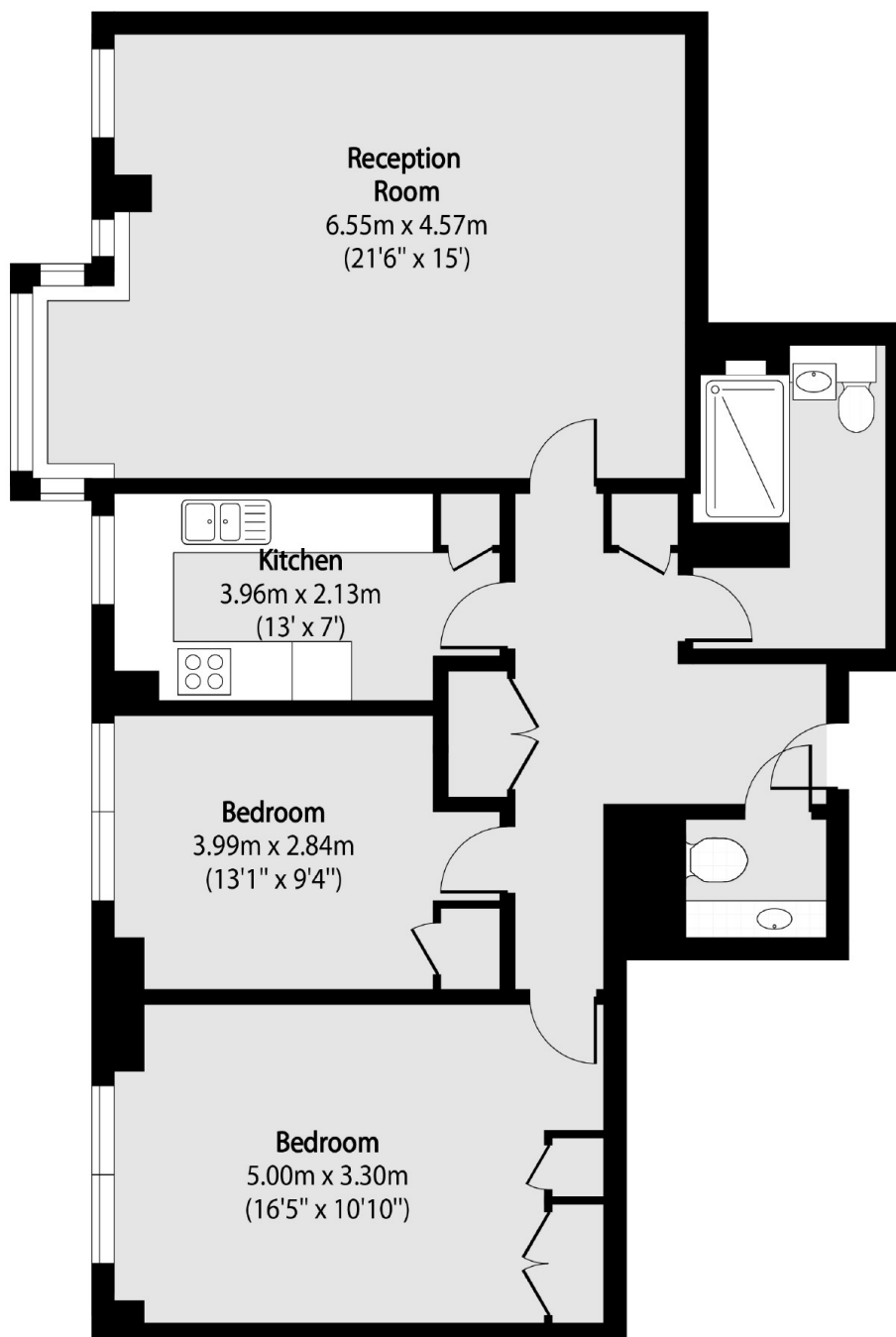
Situated on the ground floor of a prestigious Knightsbridge development, this lateral two-bedroom apartment offers elegant living in one of London's most desirable areas. Just moments from Hyde Park, the property combines a tranquil setting with unparalleled convenience.

South Lodge is located moments away from Hyde Park and the amenities Sloane Street and Knightsbridge has to offer with Harrods a short walk away.

Features

- Heart Of Knightsbridge
- Close To Hyde Park
- Porter
- No Ongoing Chain
- Share Of Freehold
- Lateral Ground Floor

Knightsbridge, London, SW7



Total area (approx): 86.12 sq m (927 sq. ft)

Dexters

South Kensington
144 Old Brompton Road
London
SW7 4NR
Sales
0207 838 0108

Energy Rating: C. We aim to make our particulars both accurate and reliable. However they are not guaranteed; nor do they form part of an offer or contract. If you require clarification on any points then please contact us, especially if you're traveling some distance to view. Please note that appliances and heating systems have not been tested and therefore no warranties can be given as to their good working order.

 **RICS** | Regulated
Estate Agent
and Letting Agent

[dexters.co.uk](https://www.dexters.co.uk)