



## Elvaston Place, SW7

£1,695,000

Set within one of South Kensington's most desirable streets, this beautifully presented two-bedroom apartment offers stylish, contemporary living in a prime location.

Elvaston Place is a beautiful residential street situated moments from the unique range of boutiques, bars and restaurants on Gloucester Road and close to the green open space of Hyde Park.

### Features

- Sought After Location
- Share Of Freehold
- No Ongoing Chain
- High Ceilings
- Close to Hyde Park
- Lift In Block



## Elvaston Place, SW7

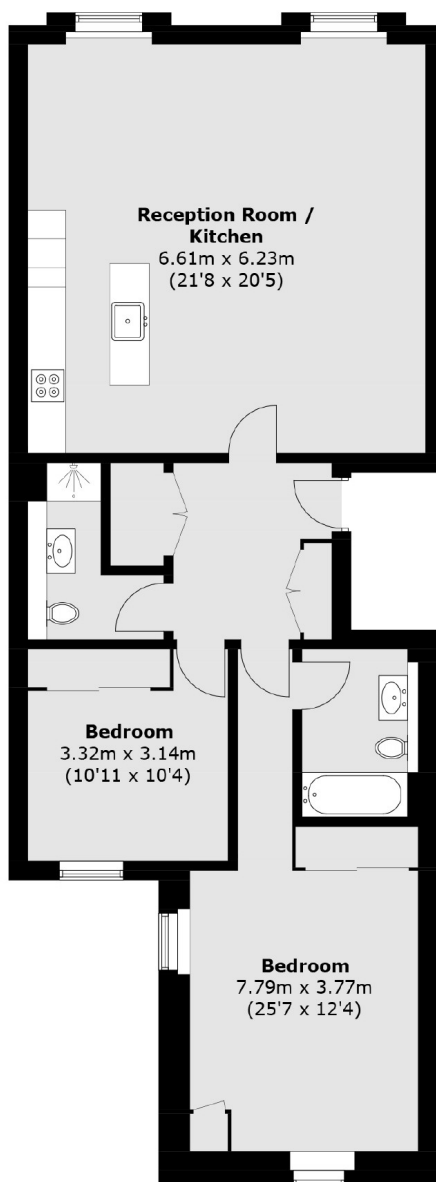
The property features a bright and spacious open-plan living and dining area, enhanced by large windows that allow for an abundance of natural light. Both bedrooms are generously sized, with ample storage and a calm, neutral décor throughout.

Just a short walk from the open green spaces of Hyde Park and the world-class restaurants, cafes, and boutiques of South Kensington, this apartment offers the perfect blend of comfort, convenience, and location.





# Elvaston Place, London, SW7



Total area (approx.): 91.8 sq. m (988.1 sq. ft)