



## Bramham Gardens, SW5

### £1,700,000

Situated on the raised ground floor of a well-maintained period building, this elegant apartment is presented in superb condition and ready to move straight into. The property effortlessly combines period charm with modern comfort, offering a refined living space in a sought-after location.

Located just moments from the shops, bars and restaurants along Earls Court Road. Motorists can gain easy access into and out of London via the A4 and M4.

### Features

- Highly Sought After Location
- Access To Gardens
- Close Proximity to Station
- No Ongoing Chain
- High Ceilings
- Immaculate Finish

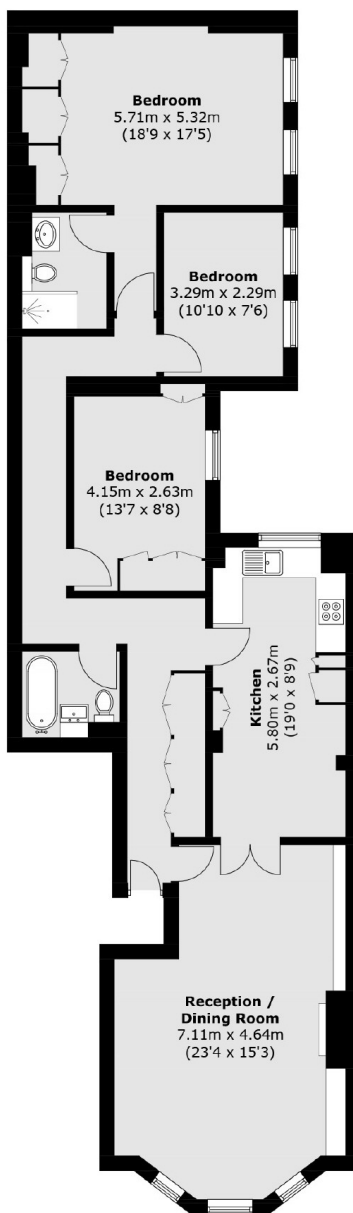


## Bramham Gardens, SW5

Upon entering, you're welcomed by a spacious hallway with generous built-in storage. This leads into a bright and luxurious living area, where high ceilings and expansive south-facing bay windows provide an abundance of natural light and serene views over the well-kept communal gardens.



# Bramham Gardens, London, SW5



Ground Floor

Total area (approx.): 111.9 sq. m (1,204.5 sq. ft)