



Longridge Road, SW5

£725,000

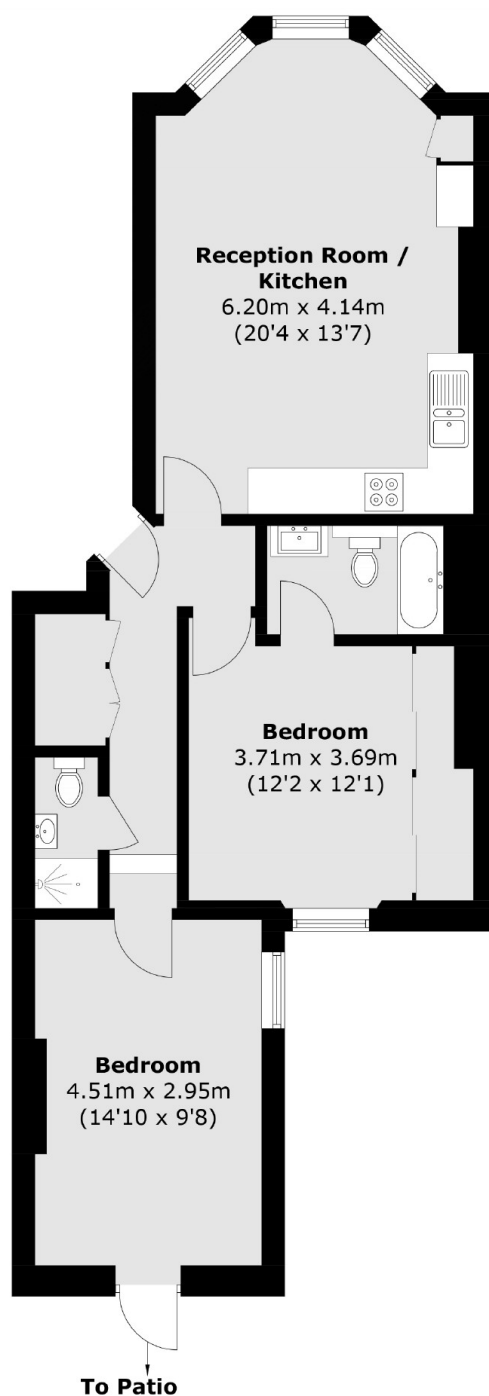
This charming two-bedroom apartment, located in the heart of Earl's Court, boasts an impeccable finish throughout. Featuring spacious interiors with high ceilings, ample storage, and a private rear garden, this property offers both comfort and style in a highly sought-after location.

Longridge Road runs off Earls Court Road where there is an abundance of boutique shops, restaurants, bars and local amenities on offer. The property is located close to Earls Court Station and the A4.

Features

- Private Garden
- Spacious Two Bedrooms
- Close To Amenities
- Walking Distance To Earls Court Tube Station
- High Ceilings

Longridge Road, London, SW5



Total area (approx.): 65.9 sq. m (709.3 sq. ft)

Dexters

South Kensington
144 Old Brompton Road
London
SW7 4NR
Sales
0207 838 0108

Energy Rating: D. We aim to make our particulars both accurate and reliable. However they are not guaranteed; nor do they form part of an offer or contract. If you require clarification on any points then please contact us, especially if you're traveling some distance to view. Please note that appliances and heating systems have not been tested and therefore no warranties can be given as to their good working order.

 **RICS** | Regulated
Estate Agent
and Letting Agent

dexters.co.uk