



Queen's Gate, SW7

£1,700,000

This immaculate two-bedroom apartment is located in the heart of South Kensington (SW7), just moments from the open green spaces of Hyde Park. Recently refurbished to an exceptional standard, the property seamlessly blends contemporary style with classic elegance.

Queen's Gate is in the heart of South Kensington within close walking distance of Kensington Gardens, Hyde Park, Knightsbridge and the Royal Albert Hall.

Features

- No Ongoing Chain
- Recently Refurbished
- Long Lease
- Porter
- Lift
- Walking Distance Of Hyde Park



Queen's Gate, SW7

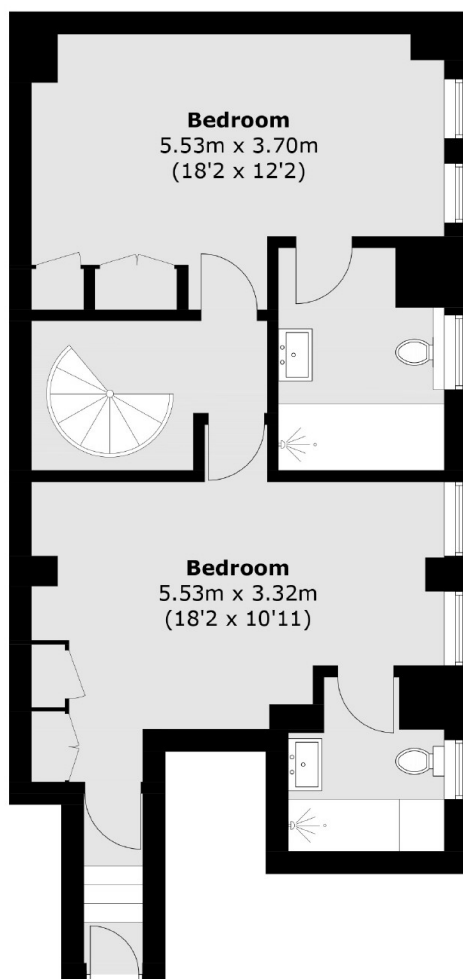
Offered with no onward chain, the apartment features a spacious open-plan living and dining area, abundance of natural light and two well-proportioned bedrooms. High-quality finishes and thoughtful design make it an ideal home for young professionals or anyone seeking a sophisticated London base.

Set within a well-maintained building, the property is surrounded by a wealth of local amenities, including world-class museums, restaurants, cafés, and boutique shops. Excellent transport links are nearby, providing easy access across London.

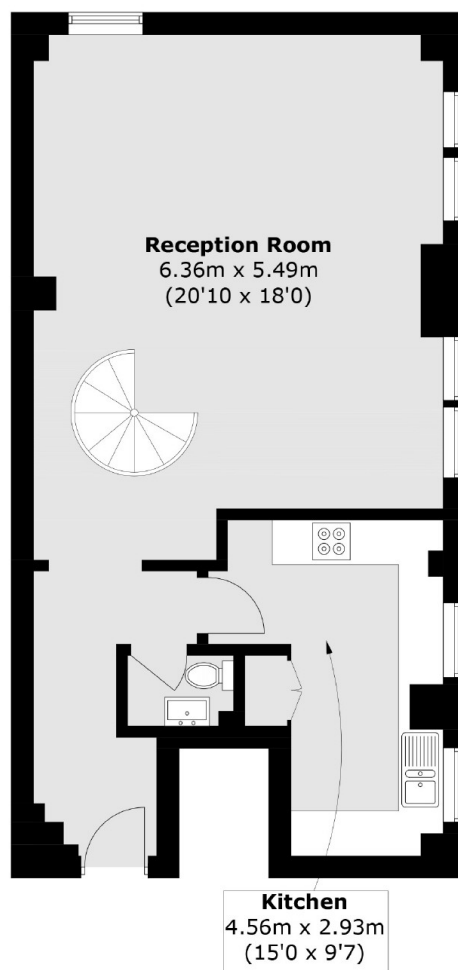
This is a rare opportunity to acquire a turn-key home in one of the capital's most prestigious postcodes.



Queen's Gate, London, SW7



First Floor



Second Floor

Total area (approx.): 115.6 sq. m (1,244.3 sq. ft)