



## Spear Mews, SW5

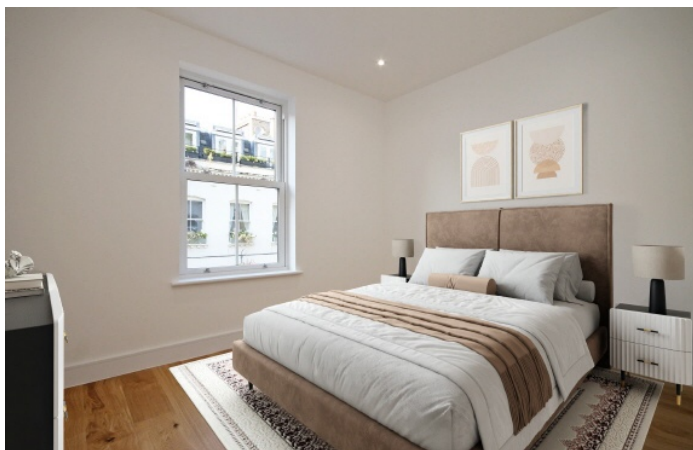
£2,100,000

A meticulously finished six bedroom mews house arranged over three floors with a large open plan kitchen/reception room, three bathrooms and plenty of storage throughout.

Spear Mews is conveniently located off Earls Court Road. Allowing for it's own little slice of heaven whilst remaining extremely close to the hustle and bustle of Earls Court and South Kensington.

### Features

- Five Double Bedrooms
- Three Bathrooms
- Plenty Of Storage
- Mews House
- Solid Oak Flooring
- New Build



## Spear Mews, SW5

A six bedroom newly built house on a quiet and desirable mews street. The house is laid out over three floors, with a large open plan kitchen reception on the ground floor and the bedrooms on the first and second floor.

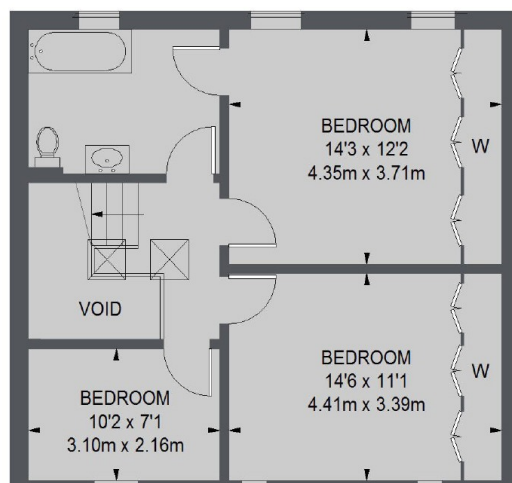
There are three fully tiled modern bathrooms with the rest of the property fitted with hardwood flooring. The kitchen has a granite work surface with a separate large fridge and a freezer, benefiting from plenty of storage.

Surrounded by beautiful Victorian buildings, this property is in an area which is high in demand. For commuters, both entrances to the tube station are close by, as are the shops, bars, cafés and restaurants.

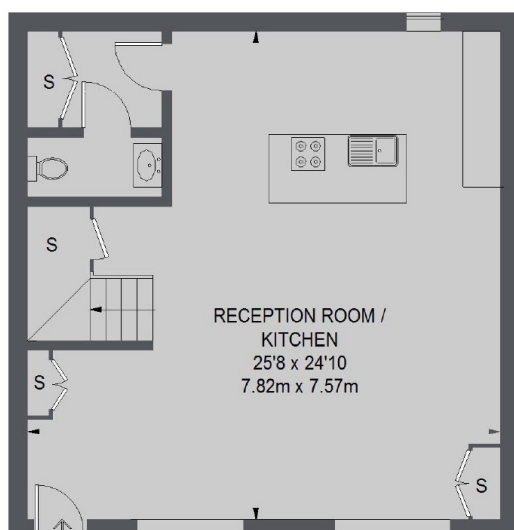




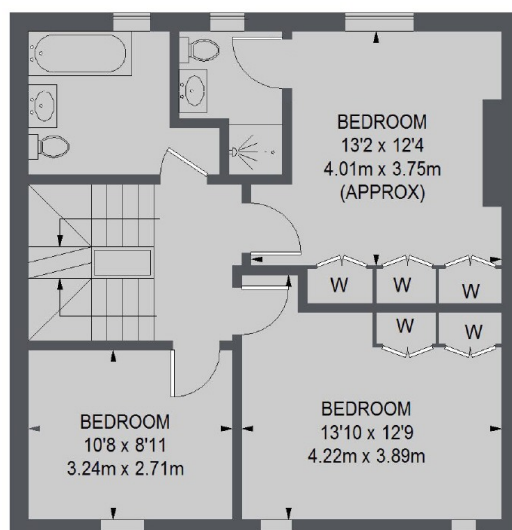
# Spear Mews, London, SW5



**SECOND FLOOR**



**GROUND FLOOR**



**FIRST FLOOR**

TOTAL APPROX. FLOOR AREA  
(EXCLUDING VOID)  
1827 SQ. FT. (169.71 SQ. M.)

**Dexters**

South Kensington  
144 Old Brompton Road  
London  
SW7 4NR  
Sales  
0207 838 0108

Energy Rating: E. We aim to make our particulars both accurate and reliable. However they are not guaranteed; nor do they form part of an offer or contract. If you require clarification on any points then please contact us, especially if you're traveling some distance to view. Please note that appliances and heating systems have not been tested and therefore no warranties can be given as to their good working order.

**RICS** Regulated  
Estate Agent  
and Letting Agent

dexters.co.uk