



Cromwell Road, SW7

£900 Per week

A two-bedroom, two-bathroom lateral flat situated in the premier portered building in South Kensington. This flat is perfect for a couple or professional sharers seeking accommodation with concierge services and access to a gym.

The property is conveniently situated just a few minutes' walk from Gloucester Road Station, with easy access to shops such as Waitrose and Sainsbury's.

Features

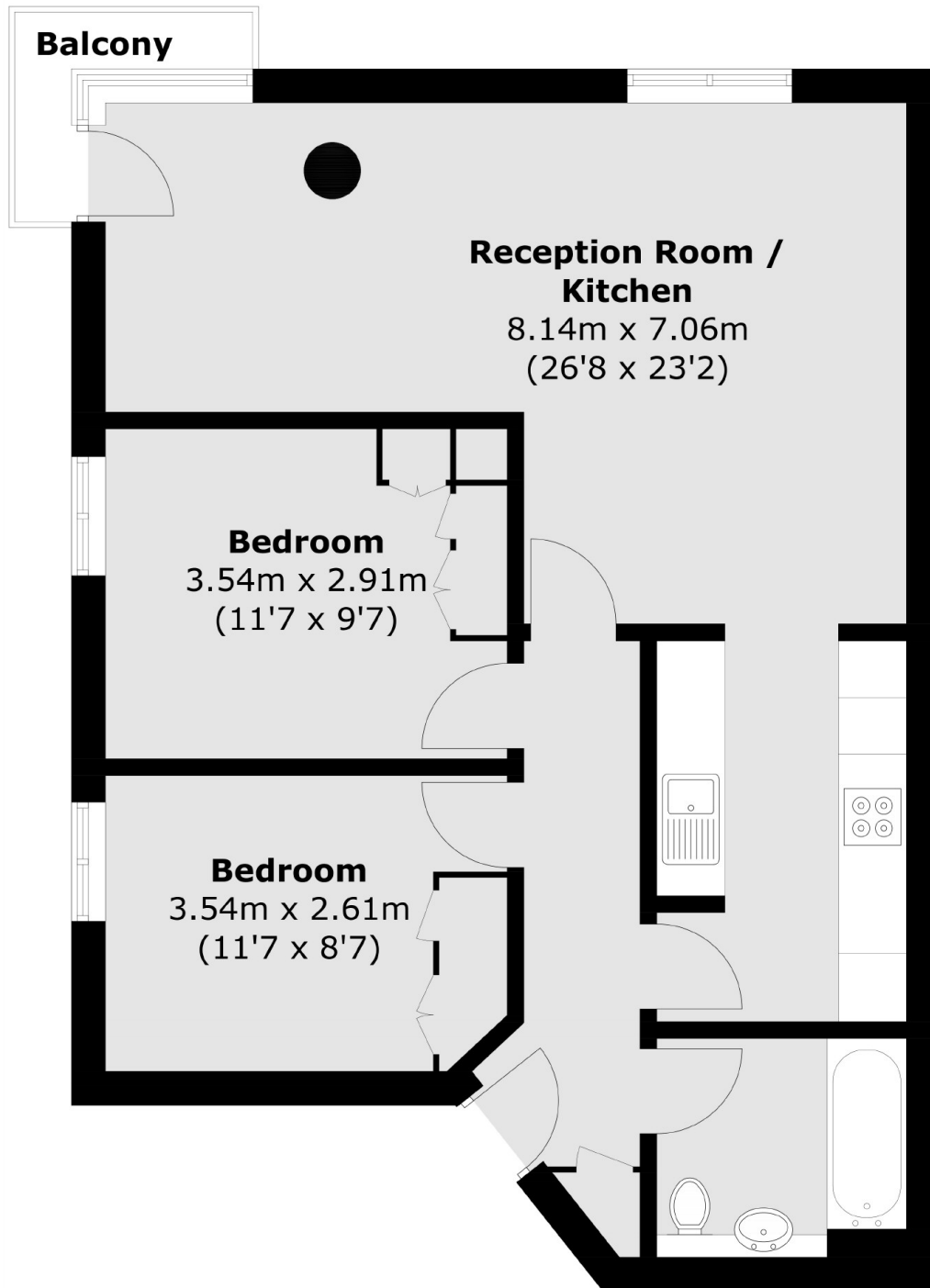
- Two Bedrooms
- Two Bathrooms
- Furnished
- Porter
- Lift
- Semi Open Plan Kitchen



Cromwell Road, SW7



Cromwell Road, London, SW7



Total area (approx.): 65.8 sq. m (708.2 sq. ft)
Balcony: 1.7 sq. m (18.2 sq. ft)

Dexters

South Kensington
144 Old Brompton Road
London
SW7 4NR
Lettings
020 7244 7711

Energy Rating: C. We aim to make our particulars both accurate and reliable. However they are not guaranteed; nor do they form part of an offer or contract. If you require clarification on any points then please contact us, especially if you're traveling some distance to view. Please note that appliances and heating systems have not been tested and therefore no warranties can be given as to their good working order.

 **RICS** | Regulated
Estate Agent
and Letting Agent

[dexters.co.uk](https://www.dexters.co.uk)