



Cromwell Road, SW7

£2,750,000

This exceptional penthouse apartment, located on the prestigious Cromwell Road, is presented in immaculate condition and offers a wealth of luxury and comfort. The apartment boasts an abundance of natural light and a spacious layout, making it the perfect urban retreat. The property features two large reception rooms, ideal for both relaxed living and elegant entertaining. The modern kitchen is designed with both functionality and style in mind, making it perfect for culinary enthusiasts. Comprising three generously sized double bedrooms, each with its own en-suite bathroom and dressing room, this penthouse offers privacy and luxury. The large roof terrace provides a fantastic space to unwind or entertain while enjoying stunning views.

Point West is a landmark building which affords a cosmopolitan and convenient lifestyle in the heart of Kensington with shops and restaurants nearby. Gloucester Road Underground Station is within a short walk.

Features

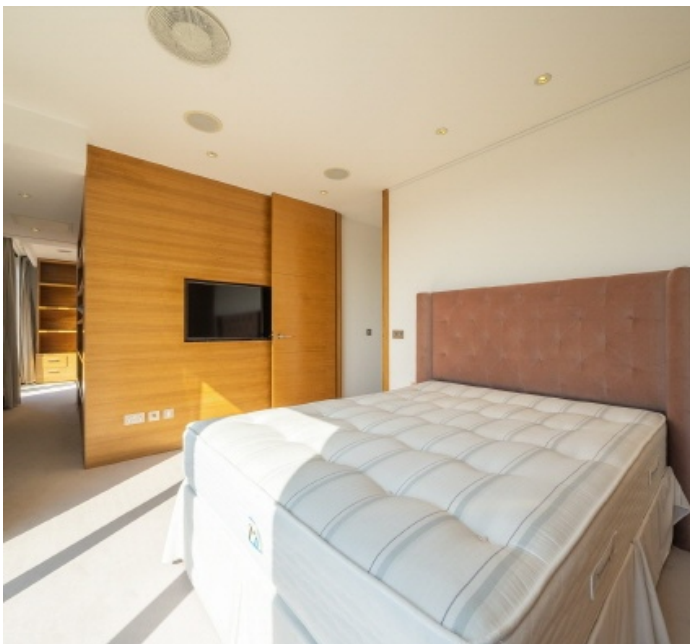
- Penthouse Apartment
- No Ongoing Chain
- Underground Parking
- Immaculate Finish
- Walking Distance Of Gloucester Road Tube Station
- Stunning Views



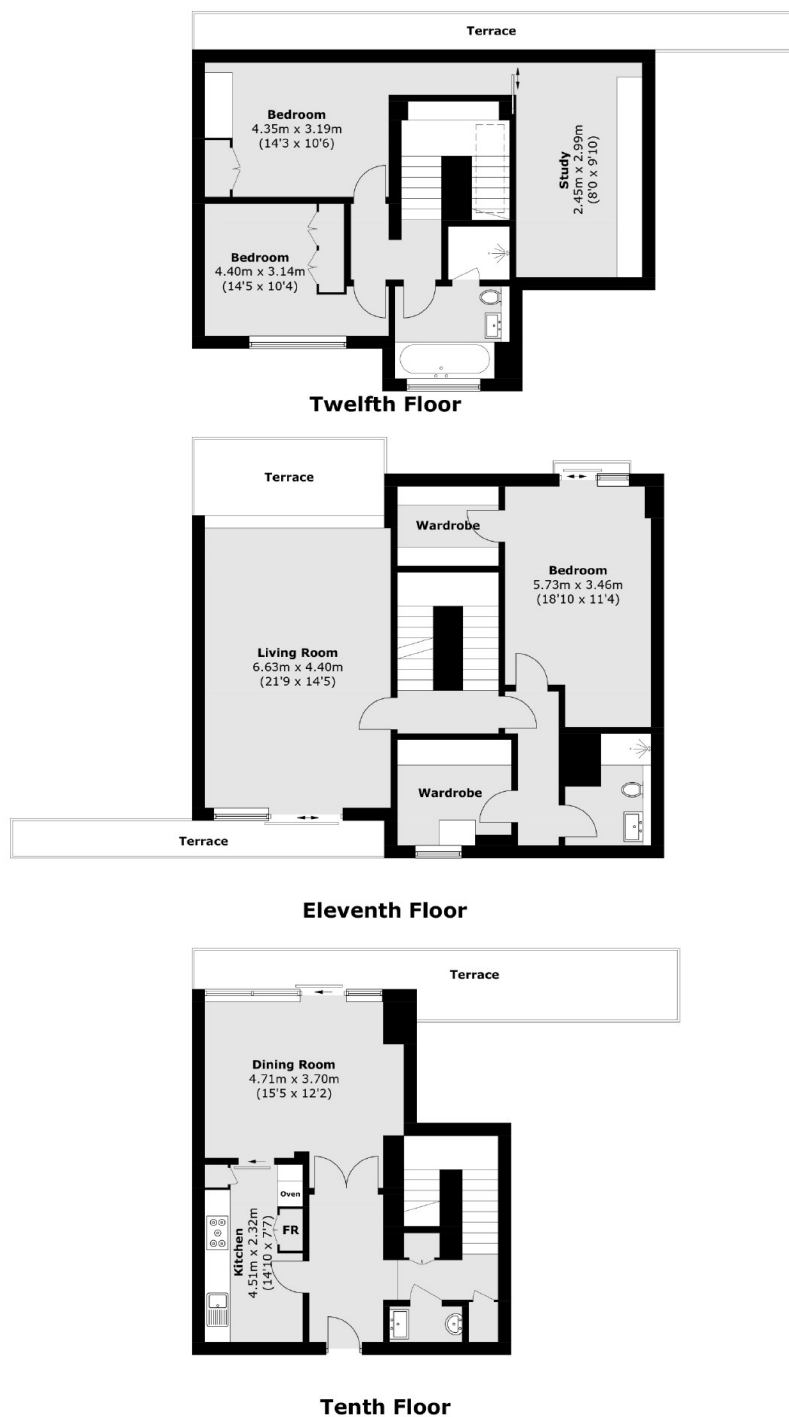
Cromwell Road, SW7

Additional amenities include a separate guest cloakroom and two secure underground parking spaces, offering ultimate convenience and peace of mind.

Situated in a well-maintained development, this exceptional apartment offers both luxury and practicality in one of the most desirable locations.



Cromwell Road, London, SW7



Total area (approx.): 196.2 sq. m (2,111.8 sq. ft)
Terrace: 42.8 sq. m (460.7 sq. ft)