



Eardley Crescent, SW5

£525,000

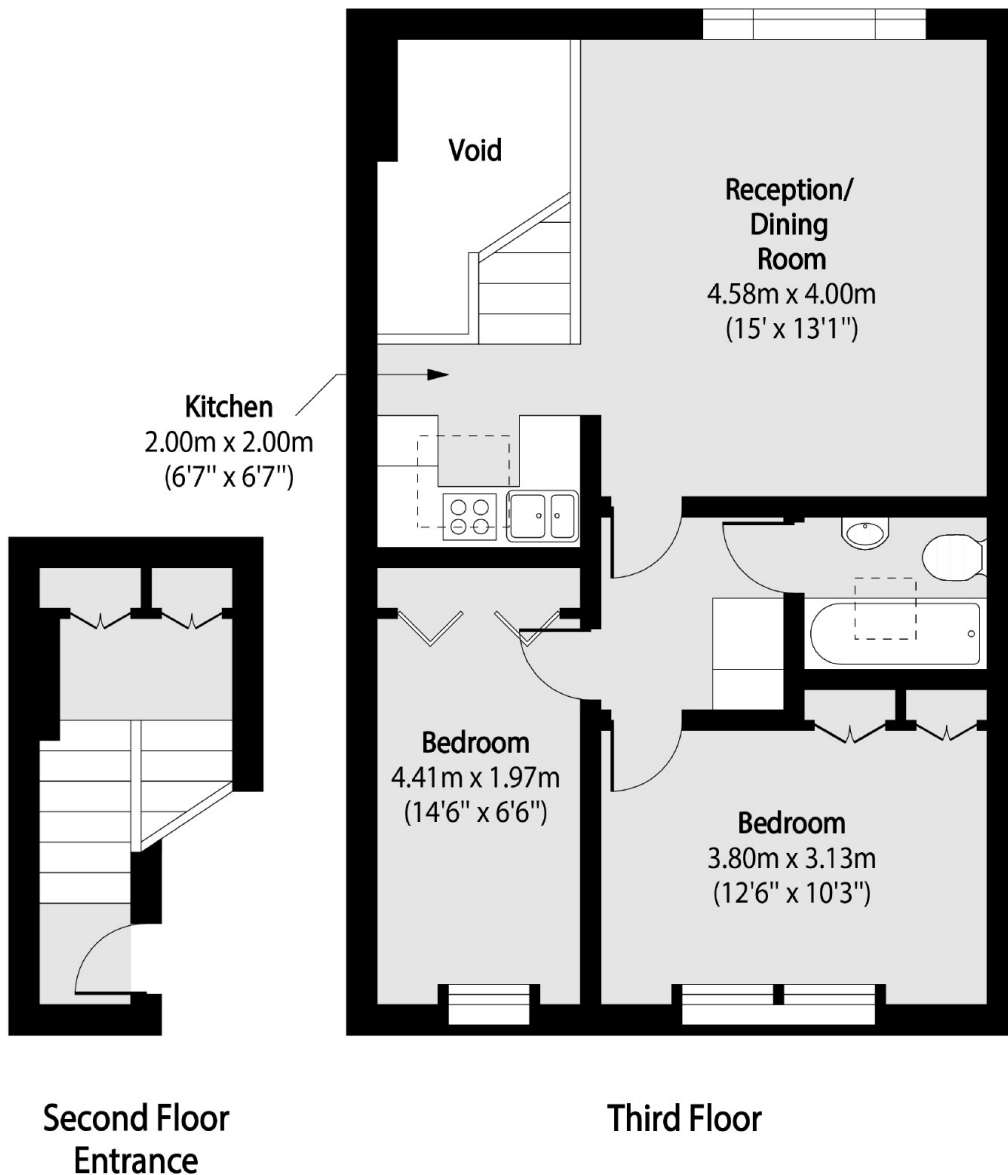
This bright and spacious top-floor apartment offers comfortable and stylish living in a prime location, just a short walk from Earl's Court Tube Station and a wide range of local amenities. The property comprises two generously sized bedrooms and a large open-plan living and dining area, ideal for both relaxing and entertaining. With an abundance of natural light flooding the space, the apartment feels airy and inviting throughout. Perfect for professionals, couples, or sharers looking for a well-connected and vibrant London lifestyle.

Eardley Crescent is located between Warwick Road and Old Brompton Road. There are many amenities on Old Brompton Road itself, and Earl's Court. Access out of London is easy on the A4 and the closest underground is Earl's Court.

Features

- No Ongoing Chain
- Walking Distance Of Earl's Court Tube Station
- Close To Amenities
- Two Spacious Bedrooms
- Ideal First Time Purchase
- Abundance Of Natural Light

Eardley Crescent, London, SW5



Total area (approx): 57.88 sq m (623 sq. ft)
(Excluding Void)