



Ashburn Gardens, SW7

£700 Per week

Dexters



Ashburn Gardens, SW7

A spacious, furnished one-bedroom flat available for rent, located just off Gloucester Road. This flat is situated on the raised ground floor of a Victorian house and features high ceilings and contemporary furnishings. Available from mid-September.

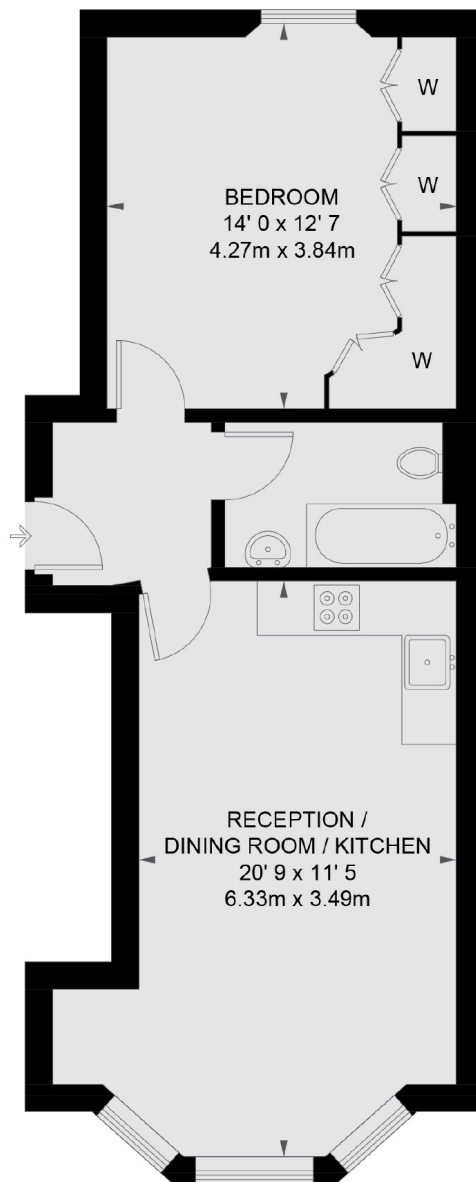
Situated just off Gloucester Road, this property offers a wide selection of restaurants and shops, including Waitrose supermarket and Boots chemist. Hyde Park and Kensington High Street are also within easy reach.

Features

- Double Bedroom
- Spacious Living Room
- Built-In Storage
- Open Plan Kitchen
- Modern Fixtures & Fittings
- Gloucester Road Underground



Ashburn Gardens, London, SW7



RAISED GROUND FLOOR

TOTAL APPROX. FLOOR AREA 521 SQ. FT. (48.4 SQ. M.)