



Abingdon Road, W8

£1,150,000

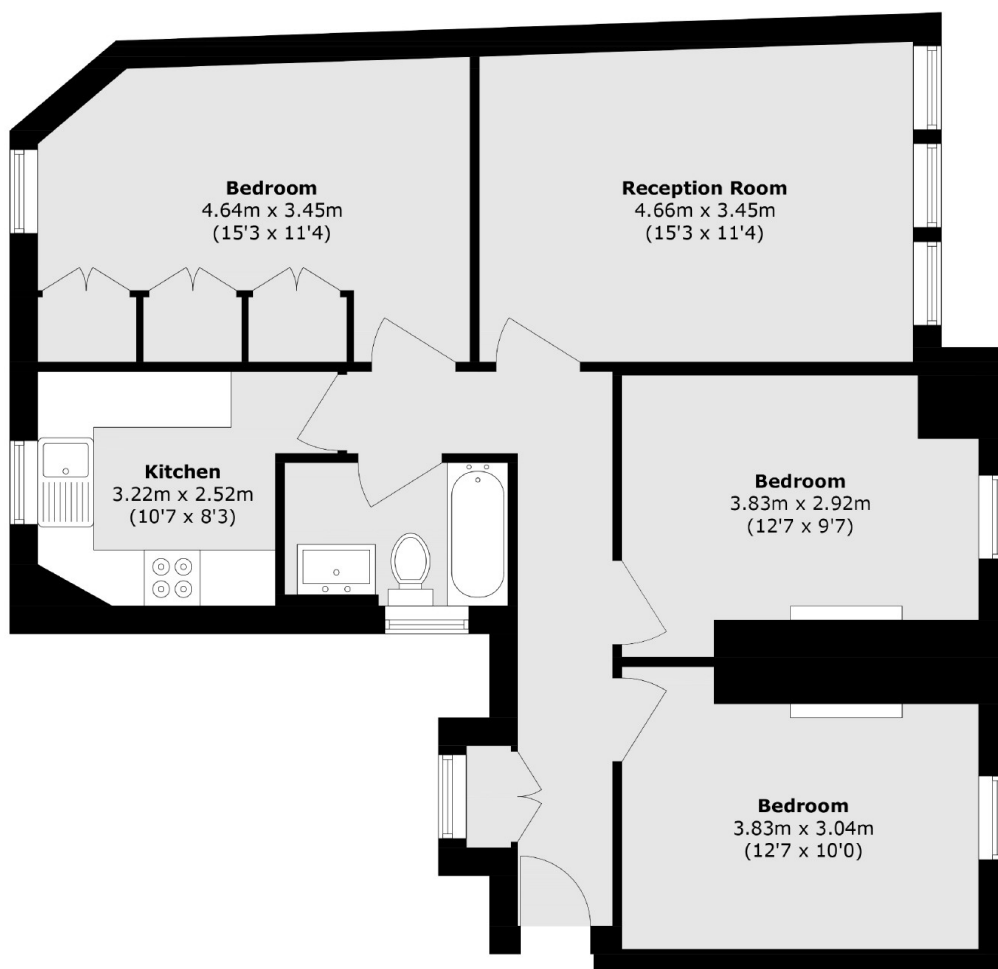
This wonderful three-bedroom apartment is set within a handsome period mansion block, quietly positioned just below High Street Kensington and moments from the open spaces of Holland Park. Elegantly presented and thoughtfully arranged, the property features high ceilings, large sash windows, and a well-proportioned layout. The spacious reception room offers an inviting living and entertaining space, while the separate kitchen is both functional and stylish. With its timeless character and superb location, this apartment offers a rare opportunity to enjoy classic London living in one of the city's most sought-after neighbourhoods.

Just off Kensington High Street and the surrounding areas boast a wealth of boutiques, bars, restaurants and shopping. The open spaces of both Holland Park and Hyde Park are within walking distance.

Features

Third Floor
Flexible Living Accommodation
Walking Distance Of Holland Park
Spacious Bedrooms
Separate Kitchen
Close To Amenities

Abingdon Road, London, W8



Total area (approx.): 75.4 sq. m (811.6 sq. ft)