



Eardley Crescent, SW5

£725,000

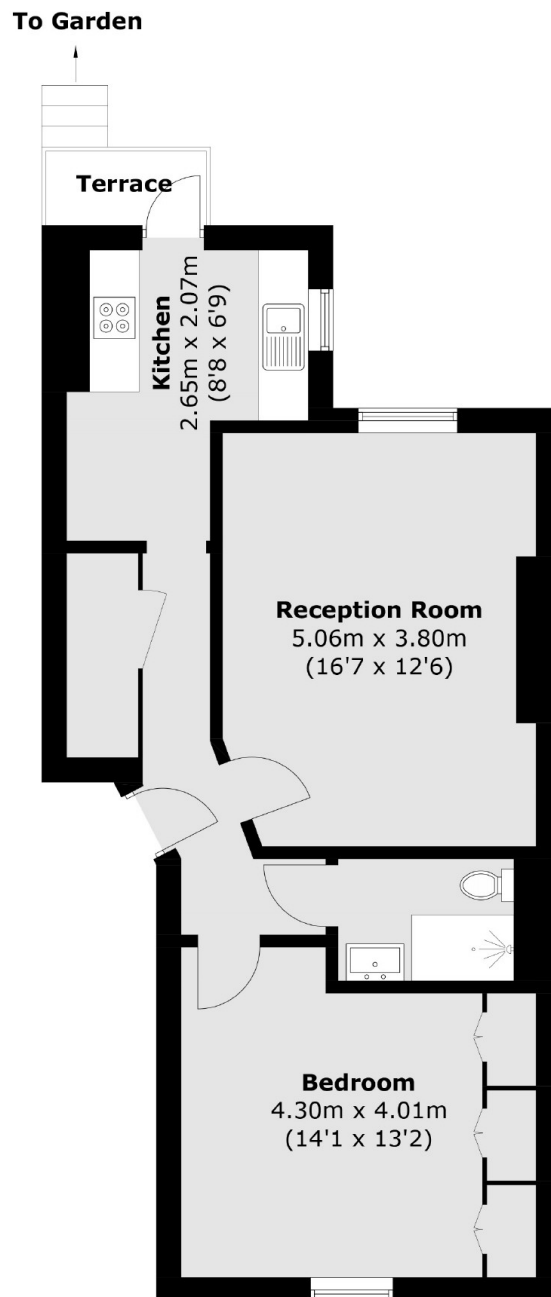
This beautifully presented one-bedroom apartment offers generous living space and is located in one of Earl's Court's most desirable areas. Just a short walk from Earl's Court Tube Station, the property benefits from excellent transport links and a vibrant local community. Featuring high ceilings and large windows, the apartment is filled with natural light, creating a bright and airy atmosphere throughout. The spacious living area is perfect for both relaxing and entertaining. A standout feature is the large private rear garden, providing a rare outdoor retreat in this central London location.

Eardley Crescent is located between Warwick Road and Old Brompton Road. There are many amenities on Old Brompton Road itself, and Earls Court. Access out of London is easy on the A4 and the closest underground is Earls Court.

Features

- Highly Sought After Location
- Walking Distance of Mainline Tube Station
- Private Gardens
- High Ceilings
- No Ongoing Chain
- £3000 Service Charge

Eardley Crescent, London, SW5



Raised Ground Floor

Total area (approx.): 56.6 sq. m (609.2 sq. ft)
Terrace : 1.7 sq. m (18.2 sq. ft)

Dexters

South Kensington
144 Old Brompton Road
London
SW7 4NR
Sales
0207 838 0108

Energy Rating: . We aim to make our particulars both accurate and reliable. However they are not guaranteed; nor do they form part of an offer or contract. If you require clarification on any points then please contact us, especially if you're traveling some distance to view. Please note that appliances and heating systems have not been tested and therefore no warranties can be given as to their good working order.

 **RICS** | Regulated
Estate Agent
and Letting Agent

[dexters.co.uk](https://www.dexters.co.uk)