



## Ennismore Gardens, SW7

£1,615 Per week

A meticulously designed and newly refurbished two-bedroom apartment situated within a distinguished stucco-fronted residence on the most prestigious garden square in South Kensington.

Ennismore Gardens is a distinguished garden square located south of Hyde Park. The area boasts a variety of local amenities in close proximity. The nearest underground station is conveniently situated in South Kensington.

### Features

- Two Bedrooms
- Brand New Refurbishment
- Furnished
- High Ceilings
- Ground Floor
- Excellent Location



## Ennismore Gardens, SW7

The reception room is remarkable, featuring high ceilings, built-in storage, and a restored original fireplace.

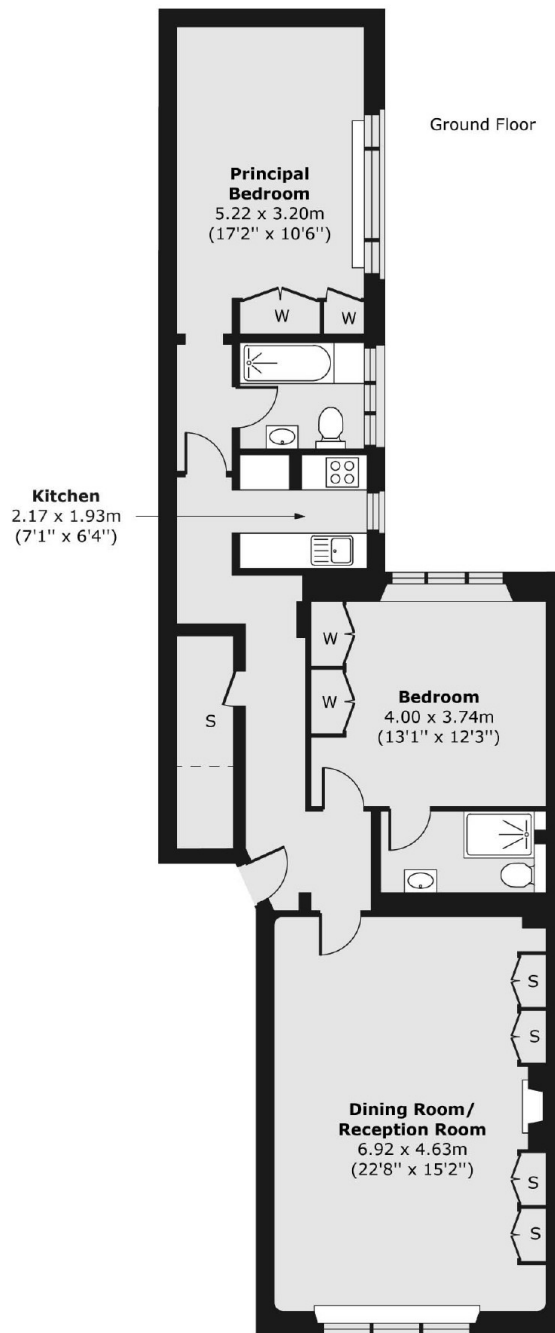
The kitchen is contemporary and fully equipped with an integrated dishwasher and washer/dryer.

On the ground floor, there are two double bedrooms, each with en-suite bathrooms, bespoke built-in storage, and furnishings of an exceptionally high standard.





# Ennismore Gardens, London, SW7



Total area (approx.) 95.72 sq. m (1,030 sq. ft)

## Dexters

South Kensington  
144 Old Brompton Road  
London  
SW7 4NR  
Lettings  
020 7244 7711

Energy Rating: D. We aim to make our particulars both accurate and reliable. However they are not guaranteed; nor do they form part of an offer or contract. If you require clarification on any points then please contact us, especially if you're traveling some distance to view. Please note that appliances and heating systems have not been tested and therefore no warranties can be given as to their good working order.

 **RICS** | Regulated  
Estate Agent  
and Letting Agent

[dexters.co.uk](https://www.dexters.co.uk)