



Redcliffe Close, SW5

£775,000

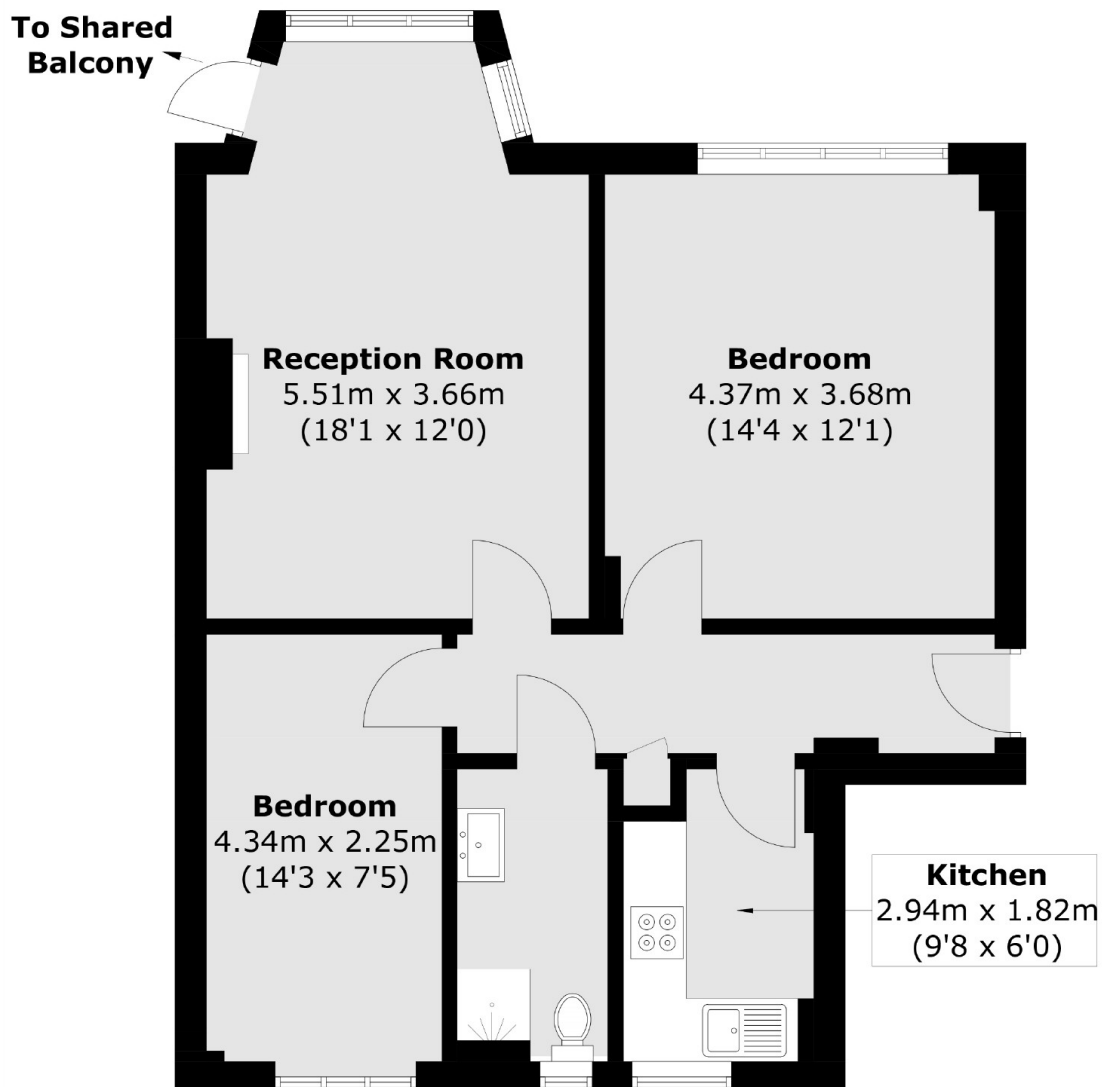
This stunning two-bedroom apartment has been recently refurbished to an exceptional standard and is presented in immaculate condition throughout. The property offers spacious and well-designed accommodation, including two generously sized bedrooms and a bright, modern living area. Residents also benefit from the convenience of an on-site porter, adding an extra layer of comfort and security. Ideally located in a highly sought-after area, the apartment is just a short walk from Earls Court Tube Station, offering excellent transport links and easy access to a wide range of shops, cafes, and amenities. Perfect for professionals or investors, this apartment combines luxury living with an unbeatable location.

Redcliffe Close is located ideally for all the shops, bars and restaurants on Old Brompton Road and within short walking distance to Earls Court tube station.

Features

- Porter
- Highly Sought After Location
- Walking Distance Of Amenities
- Immaculately Finished
- Share Of Freehold
- Abundance Of Light

Redcliffe Close, London, SW5



Third Floor

Total area (approx.): 61.9 sq. m (666.3 sq. ft)