



Courtfield Gardens, SW5

£1,153 Per week

Dexters



Courtfield Gardens, SW5

A fantastically, large three bedroom lateral apartment of a Victorian period conversion situated on a communal garden square. It has a separate eat-in kitchen, three large double bedrooms, air conditioning, 24 hour porter and dining room which is ideal for entertaining.

Located close to Gloucester Road with a wide choice of restaurants and shops including the Waitrose supermarket, Boots chemist and Pret coffee shop.

Features

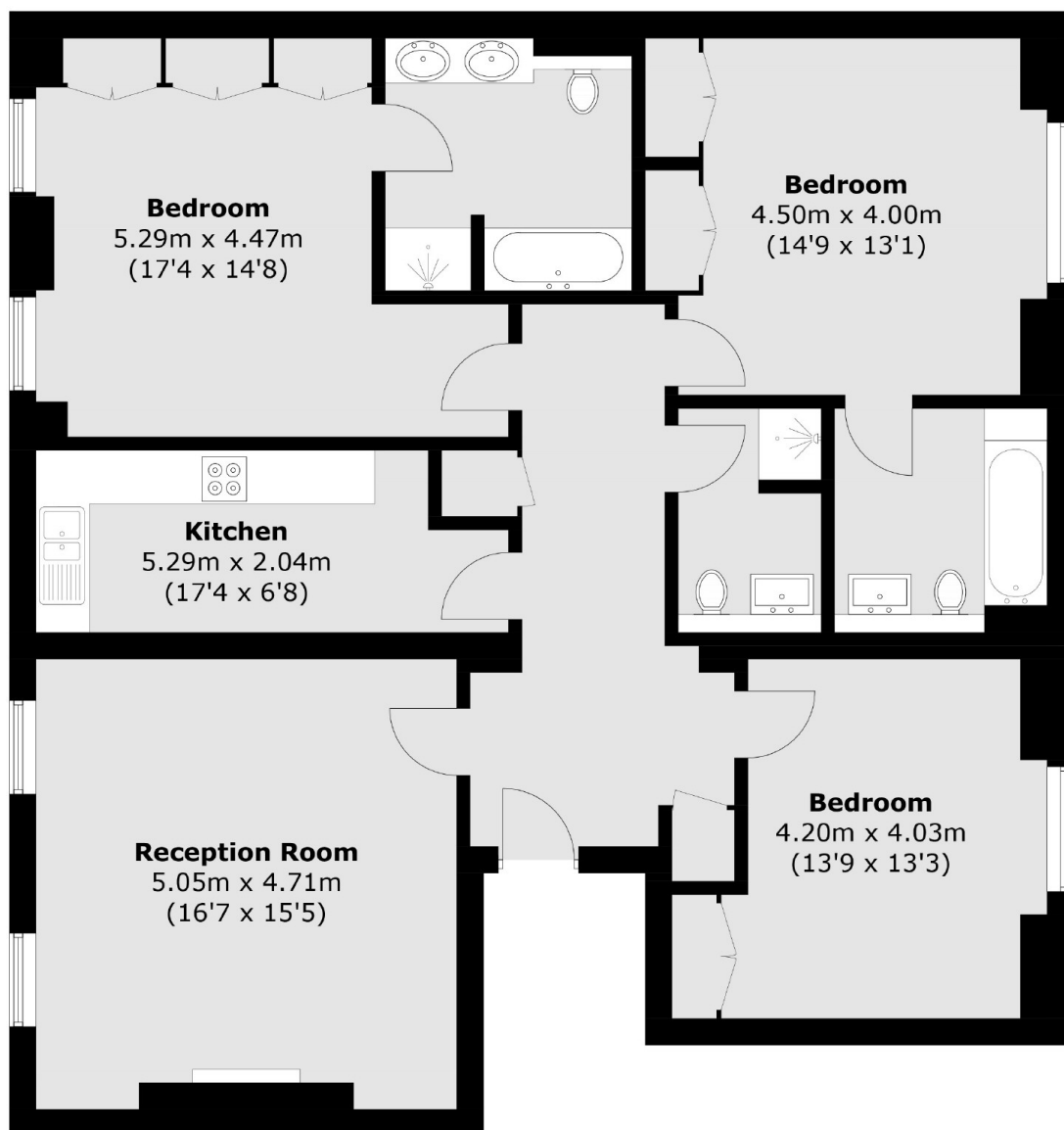
- Three Bedrooms
- Lift
- Three Bathrooms
- Air Conditioning
- Excellent Location
- Communal Gardens







Courtfield Gardens, London, SW5



First Floor

Total area (approx.): 117.9 sq. m (1,269.0 sq. ft)