

Glendower Place, SW7

£670 Per week

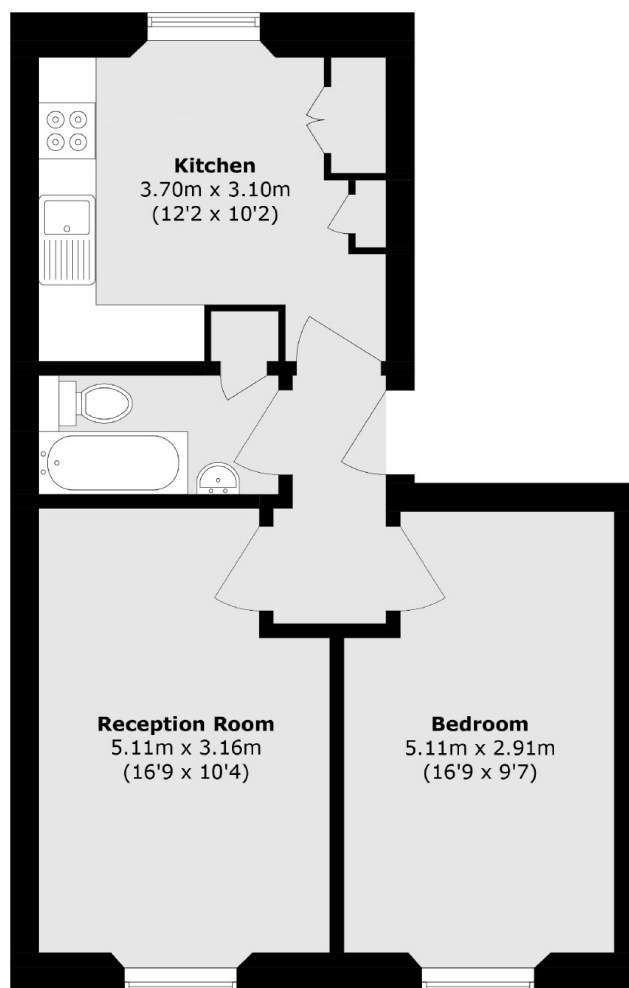
An exceptional one-bedroom apartment located on one of the most prestigious streets in South Kensington. The property boasts well-proportioned rooms, making it ideal for professionals and students seeking to be at the center of vibrant city life.

The property is ideally situated just off Old Brompton Road, mere seconds from the tube station. It is also conveniently close to various shops and restaurants, including Waitrose supermarket, Hummingbird Café, and Carluccio's restaurant.

Features

- Large One Bedroom
- High Ceilings
- Excellent Location
- Separate Kitchen
- Ample Storage

Glendower Place, London, SW7



Total area (approx.): 48.4 sq. m (520.9 sq. ft)