



Cromwell Road, SW7

£995,000

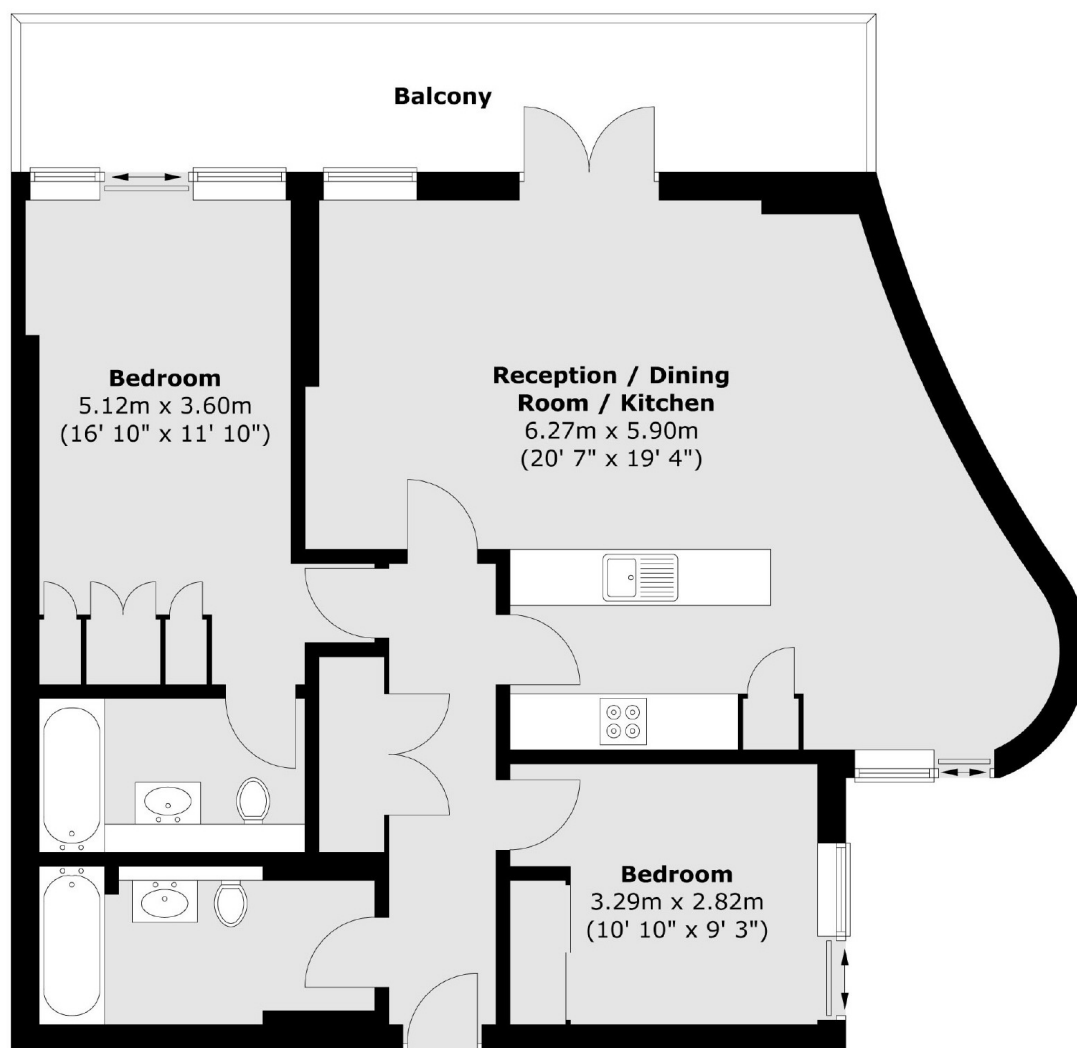
A two bedroom lateral apartment located within this hugely popular development benefiting from 24 hour concierge in the South Kensington area.

The apartment is conveniently positioned across the road from Gloucester Road underground station, close to Sainsbury's and Waitrose supermarkets and within easy reach of Kensington High Street and Hyde Park.

Features

- Two Double Bedrooms
- Two Bathrooms
- Wooden Flooring
- Built In Storage
- Private Terrace
- 24 Hour Concierge

Cromwell Road, London, SW7



Total area (approx.) : 84.6 sq. m (911 sq. ft)
Total balcony area (approx.) : 14.4 sq. m (155 sq. ft)