



Redcliffe Square, SW10

£1,095 Per week

Dexters



Redcliffe Square, SW10

An exquisite first-floor apartment is available for rent exclusively through Dexters, situated at the intersection of Redcliffe Square and Redcliffe Gardens. This property boasts exceptionally high ceilings and is located in one of the most desirable garden squares, offering picturesque views of both the square and the church.

This lateral apartment is designed around an impressive living space that offers views over the square and leads to a kitchen with dual aspect windows.

The property features two double bedrooms, one of which includes a bespoke walk-in wardrobe and an en-suite bathroom. Additionally, there is a family bathroom and a utility room equipped with a washing machine and dryer.

Redcliffe Square is one of the premier garden squares in Kensington and Chelsea, offering a plethora of shops, bars, restaurants, cafes, and supermarkets conveniently located nearby on Old Brompton Road.

Features

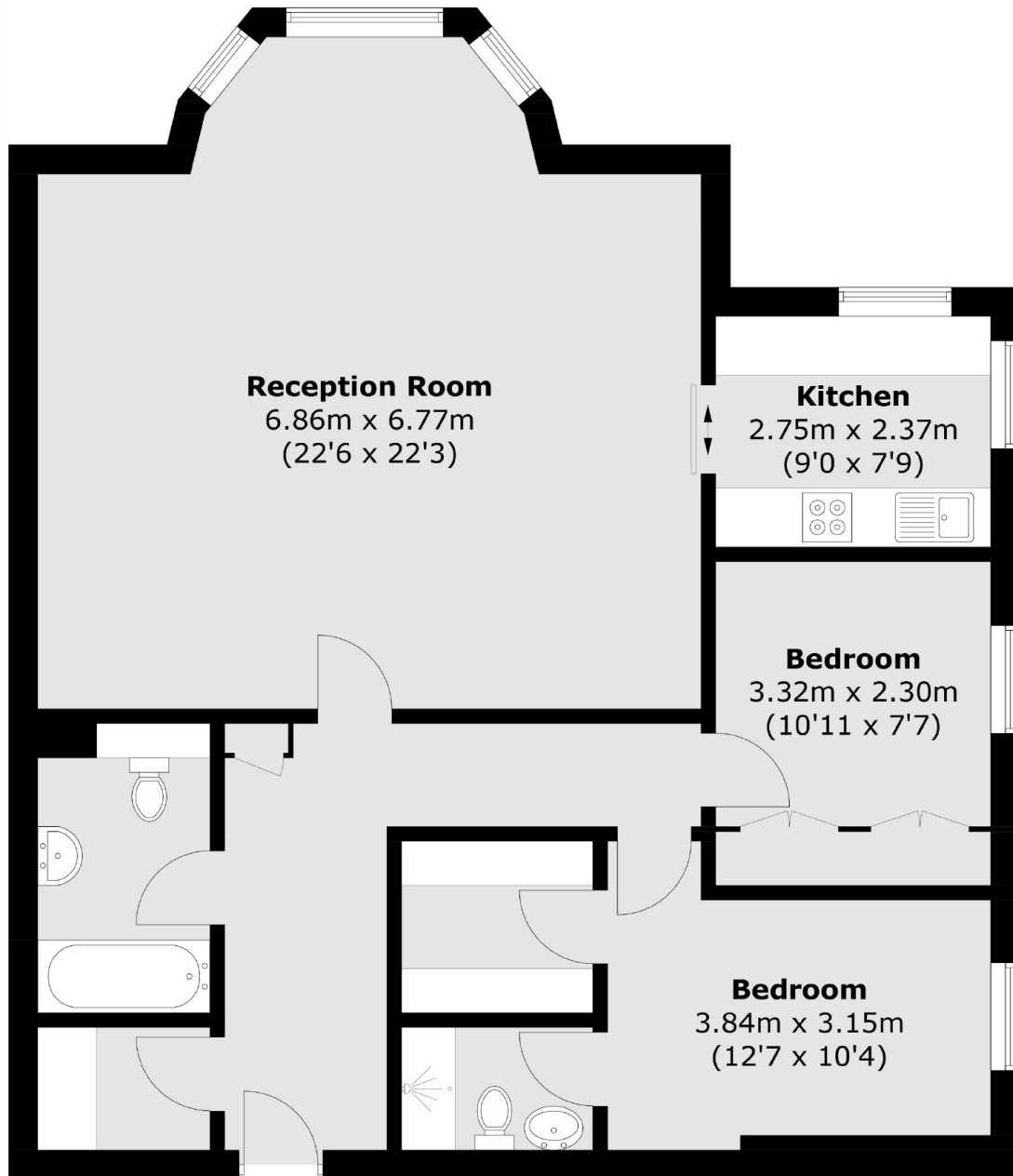
- Two Bedrooms
- Two Bathrooms
- First Floor Flat
- Views Over Communal Square
- Furnished
- Fantastic Location







Redcliffe Square,
London, SW10



Total area (approx.): 96.5 sq. m (1,038.7 sq. ft)

Dexters

South Kensington
144 Old Brompton Road
London
SW7 4NR
Lettings
020 7244 7711

Energy Rating: C. We aim to make our particulars both accurate and reliable. However they are not guaranteed; nor do they form part of an offer or contract. If you require clarification on any points then please contact us, especially if you're traveling some distance to view. Please note that appliances and heating systems have not been tested and therefore no warranties can be given as to their good working order.

RICS | Regulated
Estate Agent
and Letting Agent

dexters.co.uk