



Abingdon Villas, W8

£1,725,000

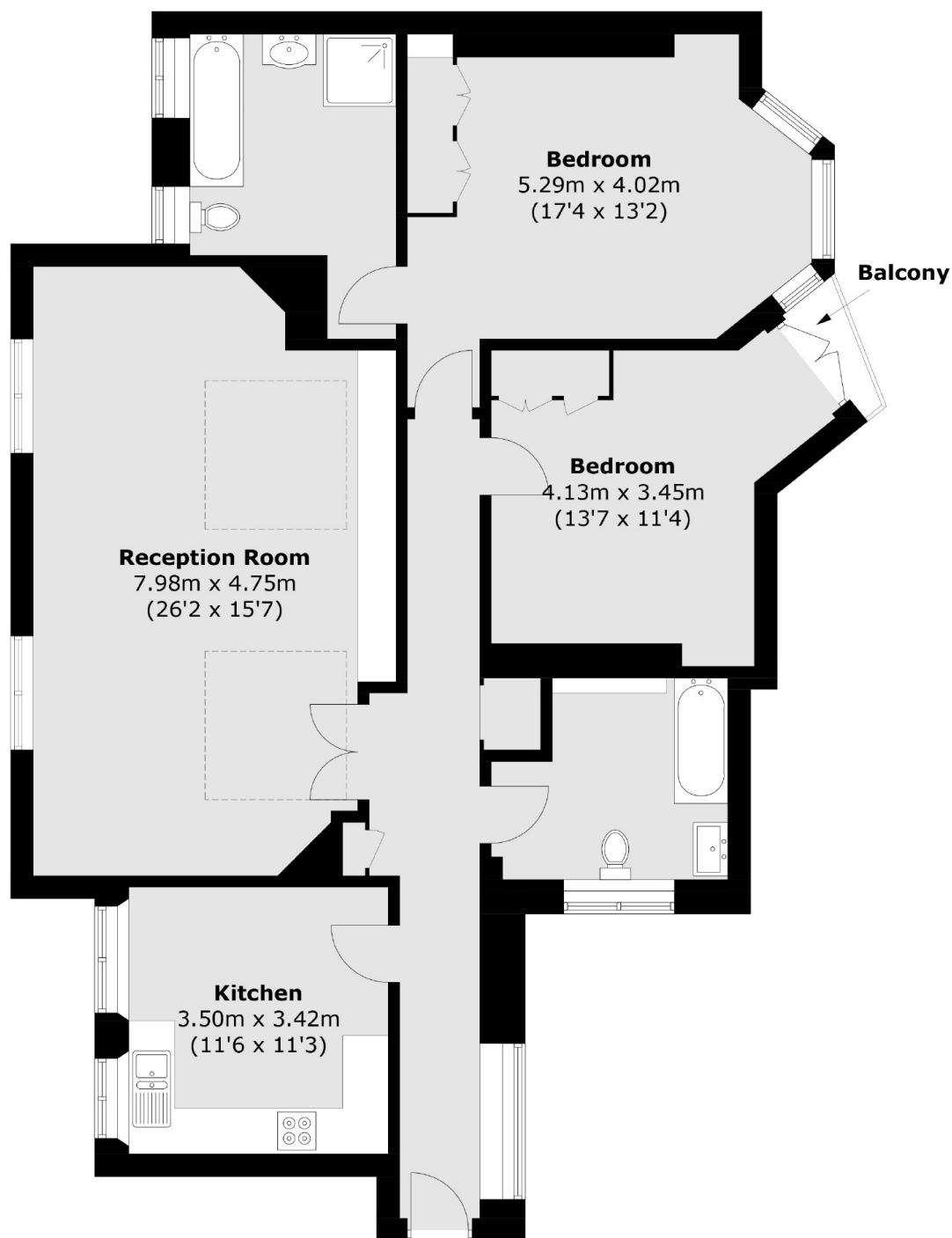
A two bedroom apartment is located on the top floor in a sought after red brick mansion block with a porter. The property offers two double bedrooms, two bathrooms, a bright eat in kitchen and separate living space. This property also benefits from a share of freehold and is in close proximity to Kensington High Street.

Abingdon Village is a popular area, offering a range of boutique and high-street shops, Michelin-starred restaurants, cafes, patisserie's, and lively bars.

Features

- Two Double Bedroom
- Portered Building
- Fourth Floor
- Lift
- Spacious Reception
- Share of Freehold

Abingdon Villas, London, W8



Total area (approx.): 120.8 sq. m (1,300.3 sq. ft)
Balcony area : 0.9 sq. m (9.7 sq. ft)

Dexters

Knightsbridge & South Kensington
144 Old Brompton Road
London
SW7 4NR
Sales
020 7838 0108

Energy Rating: E. We aim to make our particulars both accurate and reliable. However they are not guaranteed; nor do they form part of an offer or contract. If you require clarification on any points then please contact us, especially if you're traveling some distance to view. Please note that appliances and heating systems have not been tested and therefore no warranties can be given as to their good working order.

 **RICS** | Regulated
Estate Agent
and Letting Agent

dexters.co.uk