



## Ovington Square, SW3

**£645** Per week

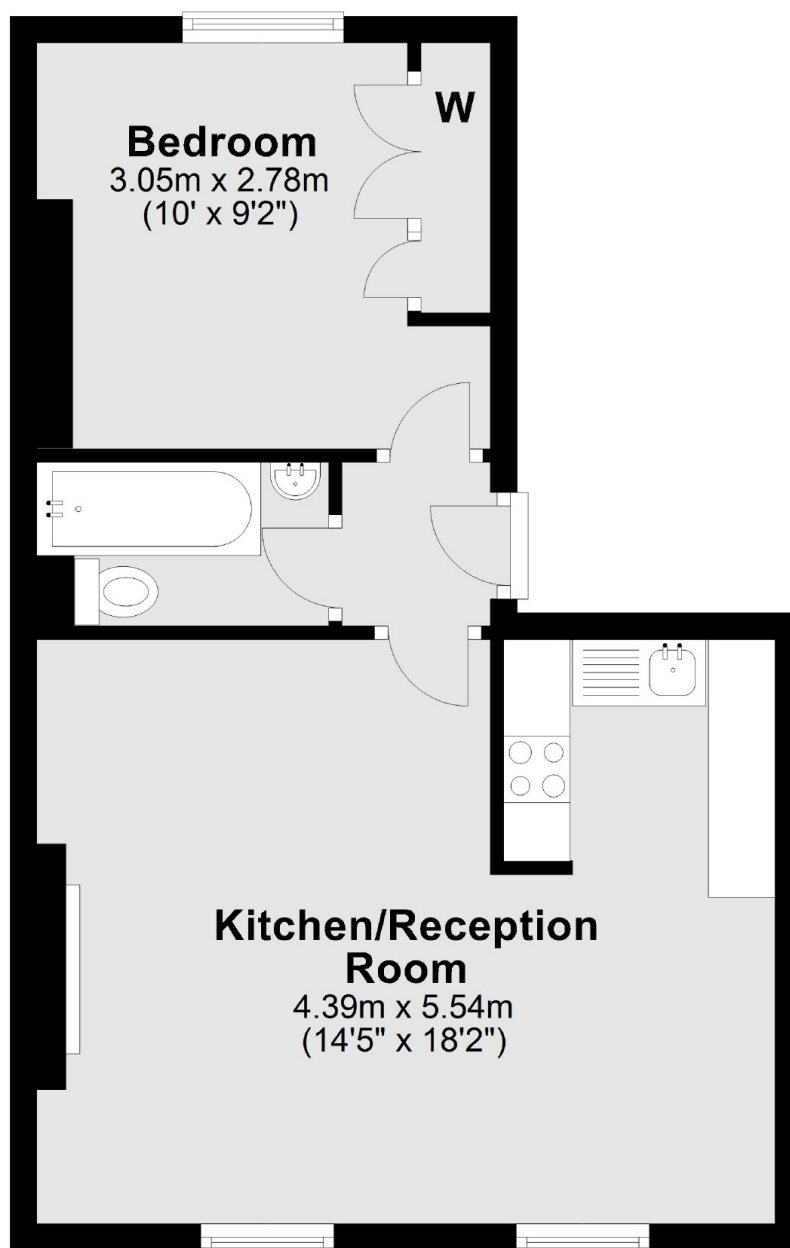
A furnished one double bedroom flat is available for rent in Knightsbridge. This property is situated on the second floor of a Victorian house and benefits from lift access. It is located on a communal garden square just off Brompton Road.

The flat is conveniently close to Sloane Street and Knightsbridge, offering easy access to notable establishments such as Harrods department store, Harrods102 supermarket, Tesco Local, Zuma restaurant, and The Wellington wine bar.

### Features

- One Double Bedroom
- Second Floor (Lift Access)
- Garden Square
- Separate Kitchen
- Large Reception Room
- South Kensington

# Ovington Square, London, SW3



## Third Floor

Total area: approx. 39.6 sq. metres (426.0 sq. feet)