



Drayton Gardens, SW10

£675 Per week

Dexters



Drayton Gardens, SW10

A very well presented two double bedroom one bathroom flat to let, arranged on the lower ground floor of a Mansion block with a lift ideally located just off Old Brompton Road,

Drayton Court is a popular mansion block ideally located between the Old Brompton Road and Fulham Road. It is close to the shops and restaurants on Fulham Road including Sophies steak house and Marks and Spencer Simply Foods.

Features

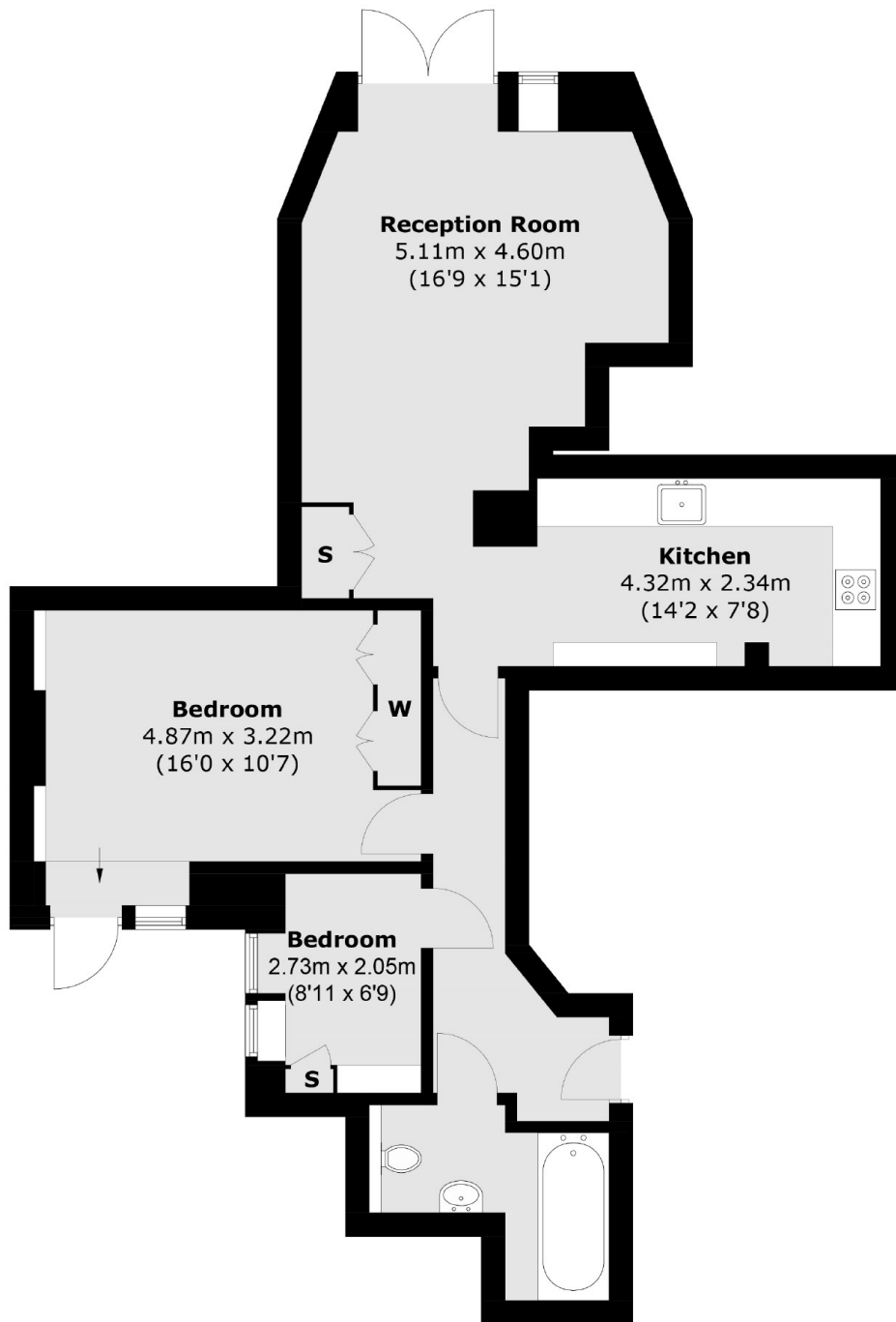
- Two Double Bedrooms
- Wooden Floors
- Well Presented
- Mansion Block
- Separate Kitchen
- Gloucester Road Station







Drayton Gardens, London, SW10



Lower Ground Floor

Total area (approx.): 69.1 sq. m (743.8 sq. ft)

Dexters

South Kensington
144 Old Brompton Road
London
SW7 4NR
Lettings
020 7244 7711

Energy Rating: C. We aim to make our particulars both accurate and reliable. However they are not guaranteed; nor do they form part of an offer or contract. If you require clarification on any points then please contact us, especially if you're traveling some distance to view. Please note that appliances and heating systems have not been tested and therefore no warranties can be given as to their good working order.

 **RICS** | Regulated
Estate Agent
and Letting Agent

[dexters.co.uk](https://www.dexters.co.uk)