



Ifield Road, SW10

£475 Per week

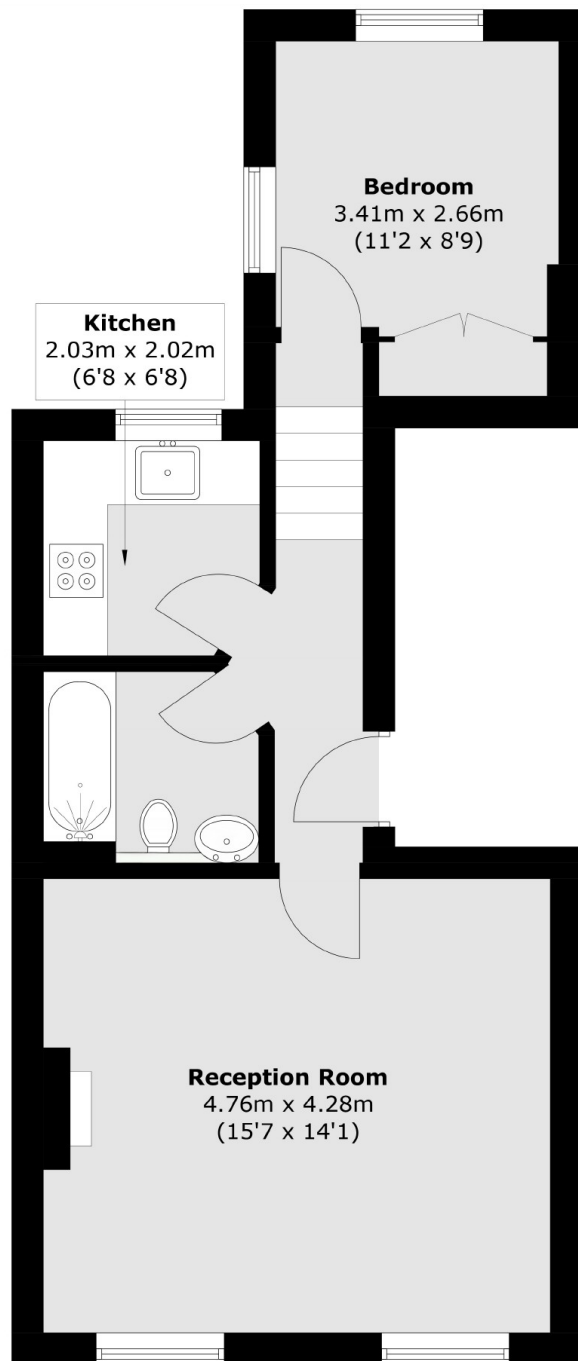
A meticulously finished one-bedroom apartment situated on the second floor of a Victorian residence, located just south of Old Brompton Road and close to Earls Court.

Situated near Earls Court Road and south of Old Brompton Road, this location offers a variety of shops and cafés, including a 24-hour Tesco supermarket, Marks and Spencer Simply Foods, Starbucks coffee shop, and Wagamama restaurant. Additionally, Earls Court Underground station is conveniently located within a mile.

Features

- Spacious Double Bedroom
- Built In Storage
- Brand New Bathroom
- New Modern Kitchen
- Quiet Residential Street

Ifield Road,
London, SW10



Total area (approx.): 42.0 sq. m (452.1 sq. ft)

Dexters

South Kensington
144 Old Brompton Road
London
SW7 4NR
Lettings
020 7244 7711

Energy Rating: C. We aim to make our particulars both accurate and reliable. However they are not guaranteed; nor do they form part of an offer or contract. If you require clarification on any points then please contact us, especially if you're traveling some distance to view. Please note that appliances and heating systems have not been tested and therefore no warranties can be given as to their good working order.

 **RICS** | Regulated
Estate Agent
and Letting Agent

[dexters.co.uk](https://www.dexters.co.uk)