



Cromwell Road, SW7

£850,000

A fifth floor two double bedroom apartment with a great layout consisting of a large reception with a private balcony, benefiting from over 935 square feet of lateral living space with wooden floors throughout.

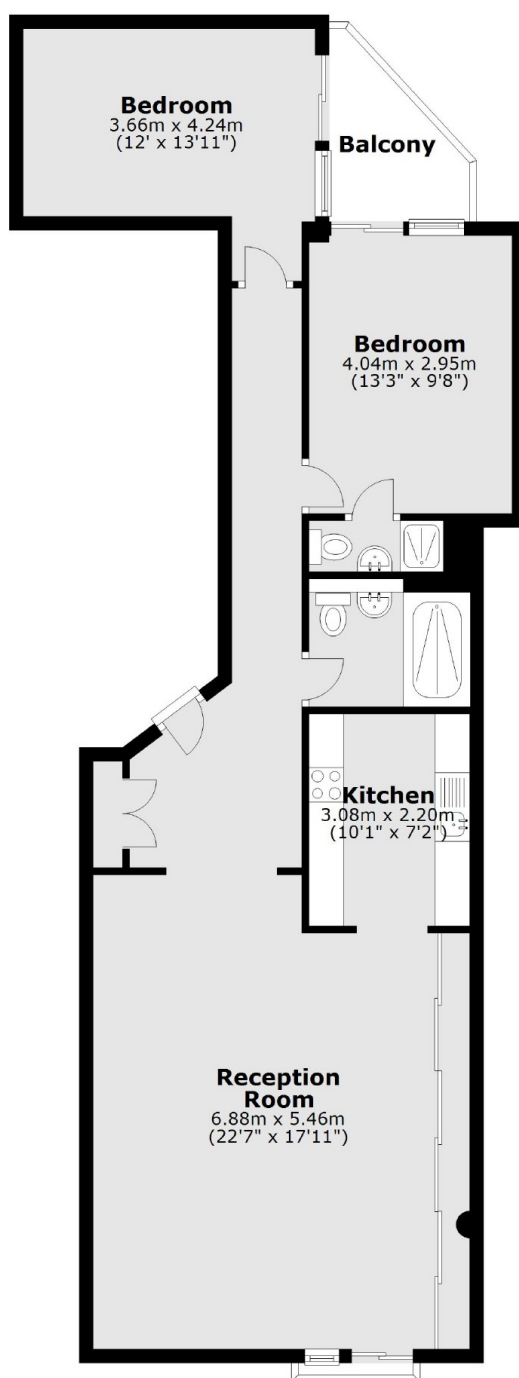
Point West is conveniently located close to Gloucester Road station with shops such as Waitrose and Sainsbury's, as well as being close to Hyde Park and Kensington High Street.

Features

- Two Double Bedrooms
- Underground Parking
- Fifth Floor
- Long Lease
- 24 Hour Concierge
- Private Balcony

Cromwell Road, London, SW7

Fifth Floor



Main area: Approx. 88.1 sq. metres (948.7 sq. feet)
Plus balconies, approx. 4.0 sq. metres (42.6 sq. feet)

Dexters

South Kensington
144 Old Brompton Road
London
SW7 4NR
Sales
0207 838 0108

Energy Rating: D. We aim to make our particulars both accurate and reliable. However they are not guaranteed; nor do they form part of an offer or contract. If you require clarification on any points then please contact us, especially if you're traveling some distance to view. Please note that appliances and heating systems have not been tested and therefore no warranties can be given as to their good working order.

 **RICS** | Regulated
Estate Agent
and Letting Agent

[dexters.co.uk](https://www.dexters.co.uk)