



**Onslow Gardens, SW7**

**£1,615** Per week

**Dexters**



## Onslow Gardens, SW7

A fantastic three bedroom property split over two floors and has gone through an extensive refurbishment prior to reaching the market.

The raised ground floor features a spacious open-plan kitchen and reception area, offering picturesque garden views through floor-to-ceiling windows and direct access to the communal garden. The lower level includes the principal bedroom with an en-suite bathroom, two additional bedrooms, a family bathroom, and a cloakroom. The property has been meticulously finished to the highest standards, making it truly unique.

Onslow Gardens, situated in one of South Kensington's prestigious garden squares, provides an exceptional location for those seeking a variety of high-quality shops and dining options in close proximity. The nearest underground station is South Kensington, served by the Piccadilly, District, and Circle lines.

### Features

- Three Bedrooms
- Two Bathrooms
- Split Levels
- Fitted Storage
- Interior Designed
- Communal Garden Access





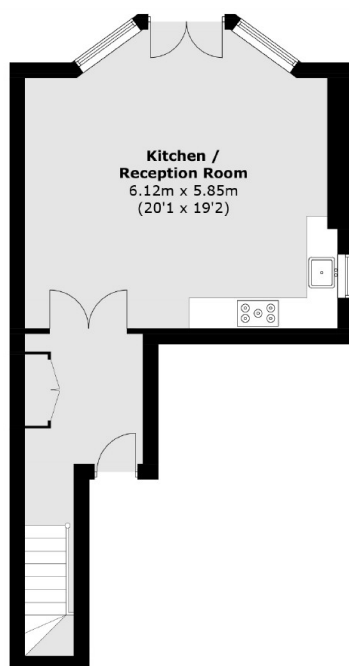




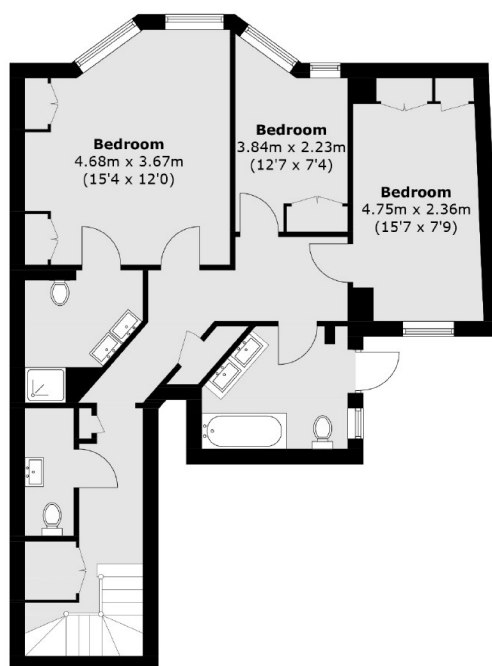




# Onslow Gardens, London, SW7



**Ground Floor**



**Lower Ground Floor**

Total area (approx.): 111.3 sq. m (1,198.9 sq. ft)