



Courtfield Gardens, SW5

£800,000

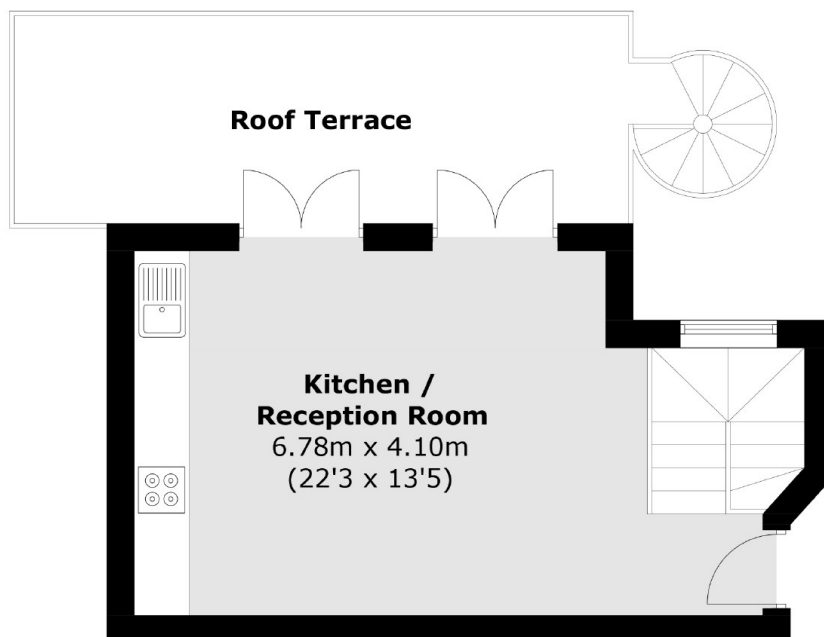
A two bedroom maisonette with a large private terrace, patio courtyard and access to an award winning garden square. The well-proportioned accommodation is arranged over the ground and lower ground floors of this handsome stucco fronted conversion in the heart of South Kensington.

Courtfield Gardens is close to Gloucester Road with a wide choice of cafés, shops and restaurants including a Waitrose supermarket. The nearest underground station is Gloucester Road.

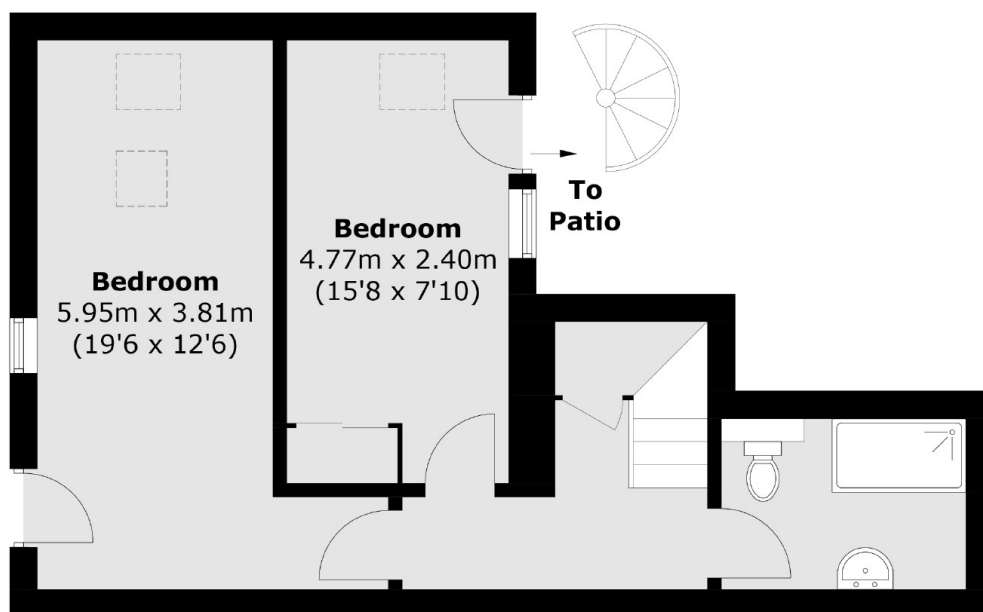
Features

- Two Bedrooms
- Open Plan Kitchen
- High Ceilings
- Private Terrace
- Share Of Freehold
- Communal Garden

Courtfield Gardens, London, SW5



Ground Floor



Lower Ground Floor

Total area (approx.): 68.3 sq. m (735.2 sq. ft)
Roof Terrace (: 16.8 sq. m (180.8 sq. ft)