



Onslow Gardens, SW7

£2,000 Per week

Dexters



Onslow Gardens, SW7

A well-proportioned two bedroom flat to let in South Kensington arranged over the first and second floor with a lift of a stucco fronted Victorian house just off Old Brompton Road and it's just a short distance to Gloucester Road.

The flat is entered into a large living room with wooden floors, views over the communal gardens and a space for entertaining. Also accessed from the living room it's the private roof terrace which overlooks the communal gardens.

The Separate kitchen is off the living room with all modern integrated appliances.

The Master bedroom has fitted storage and an en-suite bathroom. The second double bedroom has plenty of storage and access to a newly refurbished bathroom.

Located just off Old Brompton Road with a wide choice of restaurants and shops including the Waitrose supermarket, Boots chemist, prêt coffee shop and The Med Bar. Hyde Park and Kensington Gardens and Kensington High Street are within easy reach. South Kensington provides links to the city via the Piccadilly and District line.

Features

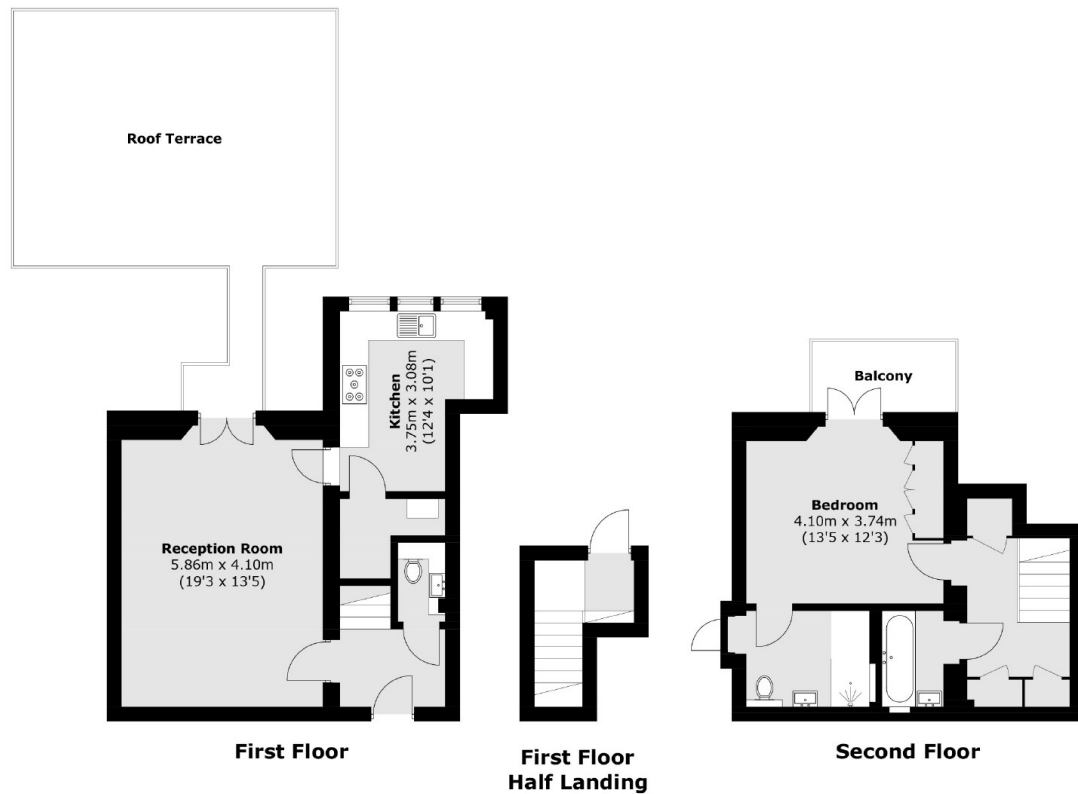
- Two bathrooms
- First floor with Lift Access
- High Ceilings
- Wood Floors
- Private Roof Terrace
- Communal Gardens







Onslow Gardens, London, SW7



Total area (approx.): 85.7 sq. m (922.5 sq. ft)
Roof Terrace / Balcony : 42.9 sq. m (461.8 sq. ft)

Dexters

South Kensington
144 Old Brompton Road
London
SW7 4NR
Lettings
020 7244 7711

Energy Rating: D. We aim to make our particulars both accurate and reliable. However they are not guaranteed; nor do they form part of an offer or contract. If you require clarification on any points then please contact us, especially if you're traveling some distance to view. Please note that appliances and heating systems have not been tested and therefore no warranties can be given as to their good working order.

 **RICS** | Regulated
Estate Agent
and Letting Agent

[dexters.co.uk](https://www.dexters.co.uk)