



Redcliffe Gardens, SW10

£715,000

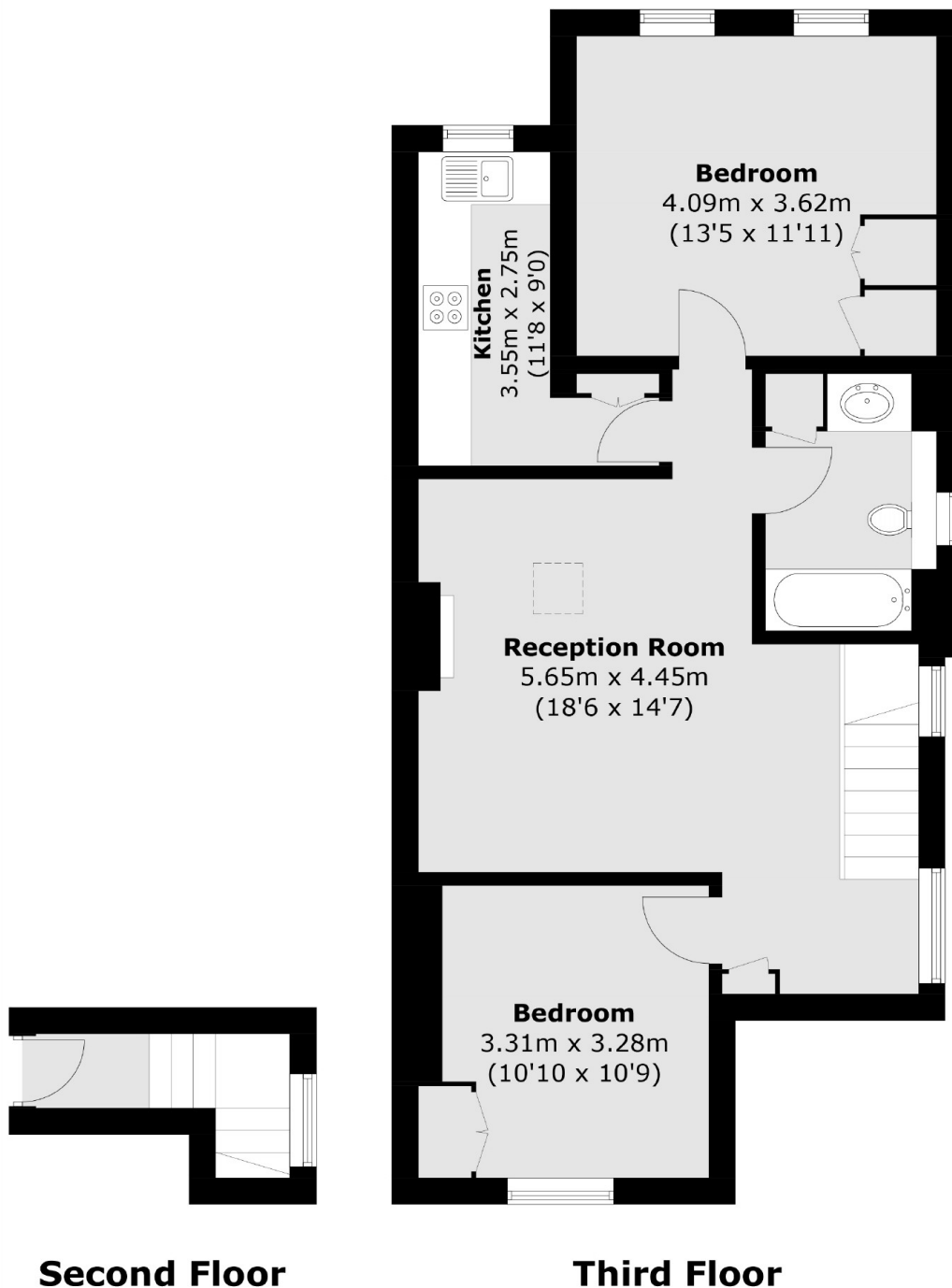
A spacious two double bedroom, one bathroom flat on the top floor of this period conversion building located on Redcliffe Gardens, benefitting from natural light throughout and ample storage this is the perfect investment or first time purchase.

Redcliffe Gardens is a popular road ideally located between the Redcliffe Square gardens and Earls court road. It is close to the shops and restaurants on Earls court road. The closest underground station is Earls Court Road.

Features

- Two Bedrooms
- Modernised Kitchen
- Plenty Of Natural Light
- No Ongoing Chain
- Close To Amenities
- Spacious Apartment
- Share Of Freehold

Redcliffe Gardens, London, SW10



Total area (approx.): 70.3 sq. m (756.7 sq. ft)

Dexters

South Kensington
144 Old Brompton Road
London
SW7 4NR
Sales
0207 838 0108

Energy Rating: . We aim to make our particulars both accurate and reliable. However they are not guaranteed; nor do they form part of an offer or contract. If you require clarification on any points then please contact us, especially if you're traveling some distance to view. Please note that appliances and heating systems have not been tested and therefore no warranties can be given as to their good working order.

 **RICS** | Regulated
Estate Agent
and Letting Agent

[dexters.co.uk](https://www.dexters.co.uk)