



Queen's Gate Gardens, SW7

£2,250,000

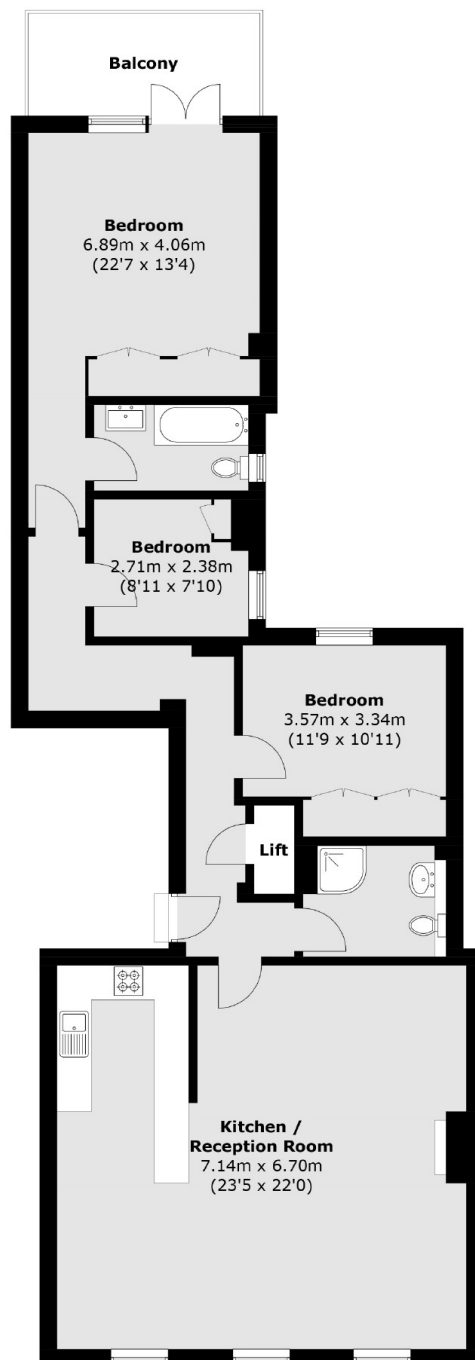
A three double-bedroom apartment offers a large open plan kitchen/living area, spacious principal bedroom with en-suite, private balcony, and direct lift access to the property all finished to a high standard.

Situated close to the open spaces of Hyde Park and Kensington Gardens. The property is well located for the shops and restaurants of Knightsbridge and South Kensington and moments from the world class selection of museums; including the Natural History Museum and the Victoria and Albert Museum and offers excellent transport links.

Features

- Three Bedroom
- Share of Freehold
- Balcony
- Direct Lift Access
- En-Suite
- Gloucester Road Station

Queen's Gate Gardens, London, SW7



Total area (approx.): 109.7 sq. m (1180.8 sq. ft)
(Excluding Lift)

Balcony : 7.4 sq. m (79.6 sq. ft)