



Onslow Gardens, SW7

£1,730 Per week

Dexters



Onslow Gardens, SW7

A beautifully presented and well-proportioned ground and lower ground floor two bedroom property situated in one of the most desirable garden squares in South Kensington.

The property benefits from high ceilings and neutral decor throughout and comprises; a large reception room with bay windows looking onto the communal gardens, a separate kitchen, a principle bedroom with an en-suite bathroom and a second double bedroom with an en-suite bathroom as well.

Onslow Gardens forms part of the Welcome Trust Estate and is located in the heart of South Kensington within a walking distance to the excellent local shops and restaurants of the area.

Features

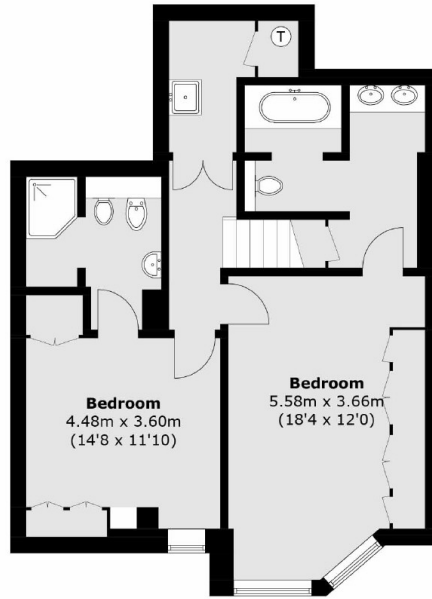
- Two Bedrooms
- Two Bathrooms
- Refurbished
- Ground and Lower Ground
- Communal Garden Square
- Excellent Location



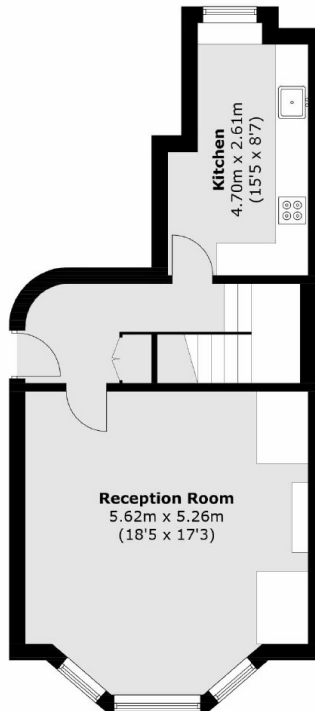




Onslow Gardens, London, SW7



Ground Floor



Lower Ground Floor

Total area (approx.): 110.6 sq. m (1,190.5 sq. ft)