



Trevor Place, SW7

£4,153 Per week

Dexters



Trevor Place, SW7

Well presented family home positioned in the heart of Knightsbridge with superb entertaining space including a double reception room, a large kitchen/ dining room and five bedrooms.

The property comprises a master bedroom suite with a separate dressing room, 4 further bedrooms with fitted wardrobes, a double reception room, a kitchen dining room, a family bathroom, a shower room, a study/ dressing room, a utility room, a cloakroom and a patio garden.

Trevor Place is located south of Knightsbridge and Hyde Park and to the north of Brompton Road. The closest tube station is Knightsbridge (Piccadilly Line) whilst the many amenities along Sloane Street and Brompton Road are also within 0.5 miles of the property.

Features

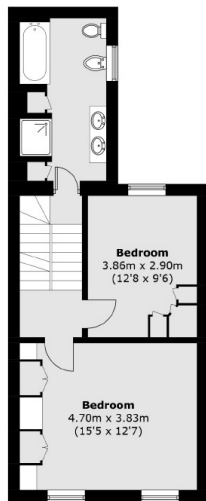
- 5 bedrooms (1 en suite)
- Double reception room
- Kitchen/ dining room
- 2 bathrooms
- Patio garden
- Utility room



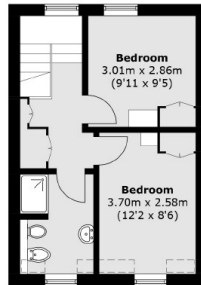




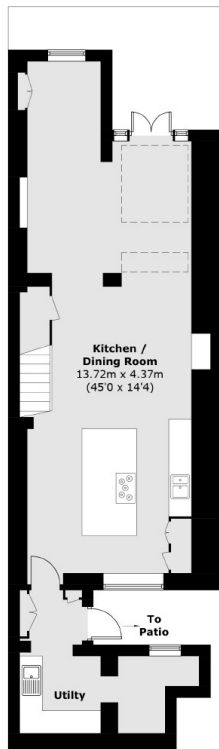
Trevor Place, London, SW7



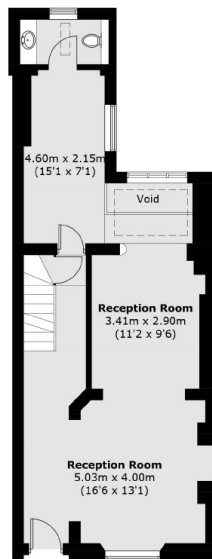
Second Floor



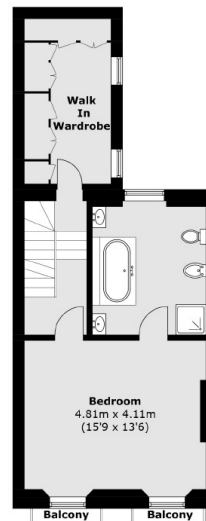
Third Floor



Lower Ground Floor



Ground Floor



First Floor

Total area (approx.): 249.1 sq. m (2,681.3 sq. ft)
(Excluding Void)
Balcony: 1.5 sq. m (16.1 sq. ft)