



Cromwell Road, SW7

£435,000

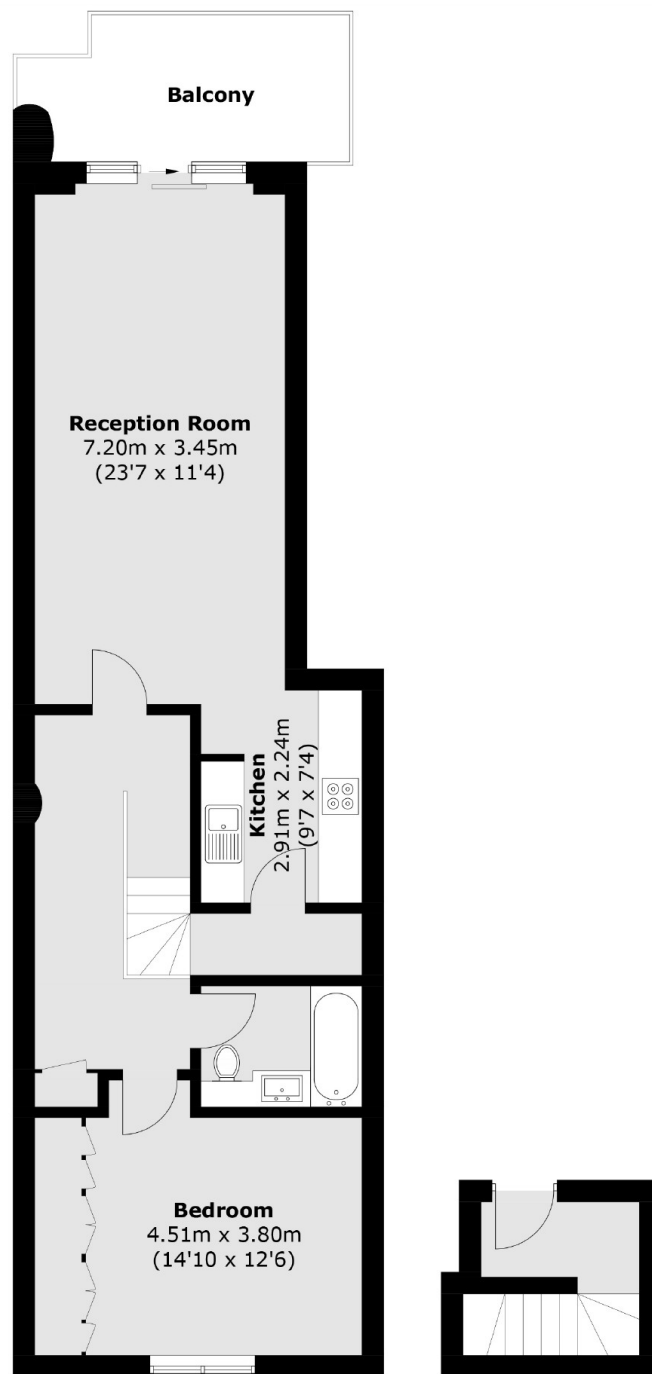
A beautiful one double bedroom apartment with far reaching views towards the city situated on the 6th floor of this popular building with lift, porter and an allocated parking space.

Point West is conveniently located for a vast array of shops, bars and restaurants. The A4/M4 is easily accessible as is the closest underground station situated at Gloucester Road.

Features

- One Double Bedroom
- Large Reception Room
- Great City Views
- Underground Parking Space B2/6
- Lift and Porter
- Gloucester Road Station

Cromwell Road, London, SW7



Fifth Floor

Sixth Floor

Total area (approx.): 70.7 sq. m (761.0 sq. ft)
Balcony: 8.3 sq. m (89.3 sq. ft)

Dexters

South Kensington
144 Old Brompton Road
London
SW7 4NR
Sales
0207 838 0108

Energy Rating: C. We aim to make our particulars both accurate and reliable. However they are not guaranteed; nor do they form part of an offer or contract. If you require clarification on any points then please contact us, especially if you're traveling some distance to view. Please note that appliances and heating systems have not been tested and therefore no warranties can be given as to their good working order.

 **RICS** | Regulated
Estate Agent
and Letting Agent

[dexters.co.uk](https://www.dexters.co.uk)