



Drayton Gardens, SW10

£808 Per week

Brand newly refurbished two double bedroom one bathroom flat to let, arranged over the second floor of a Mansion block with lift ideally located just off Old Brompton Road.

Drayton Court is a popular mansion block ideally located between the Old Brompton Road and Fulham Road. It is close to the shops and restaurants on Fulham Road including Sophies steak house and Marks and Spencer Simply Foods.

Features

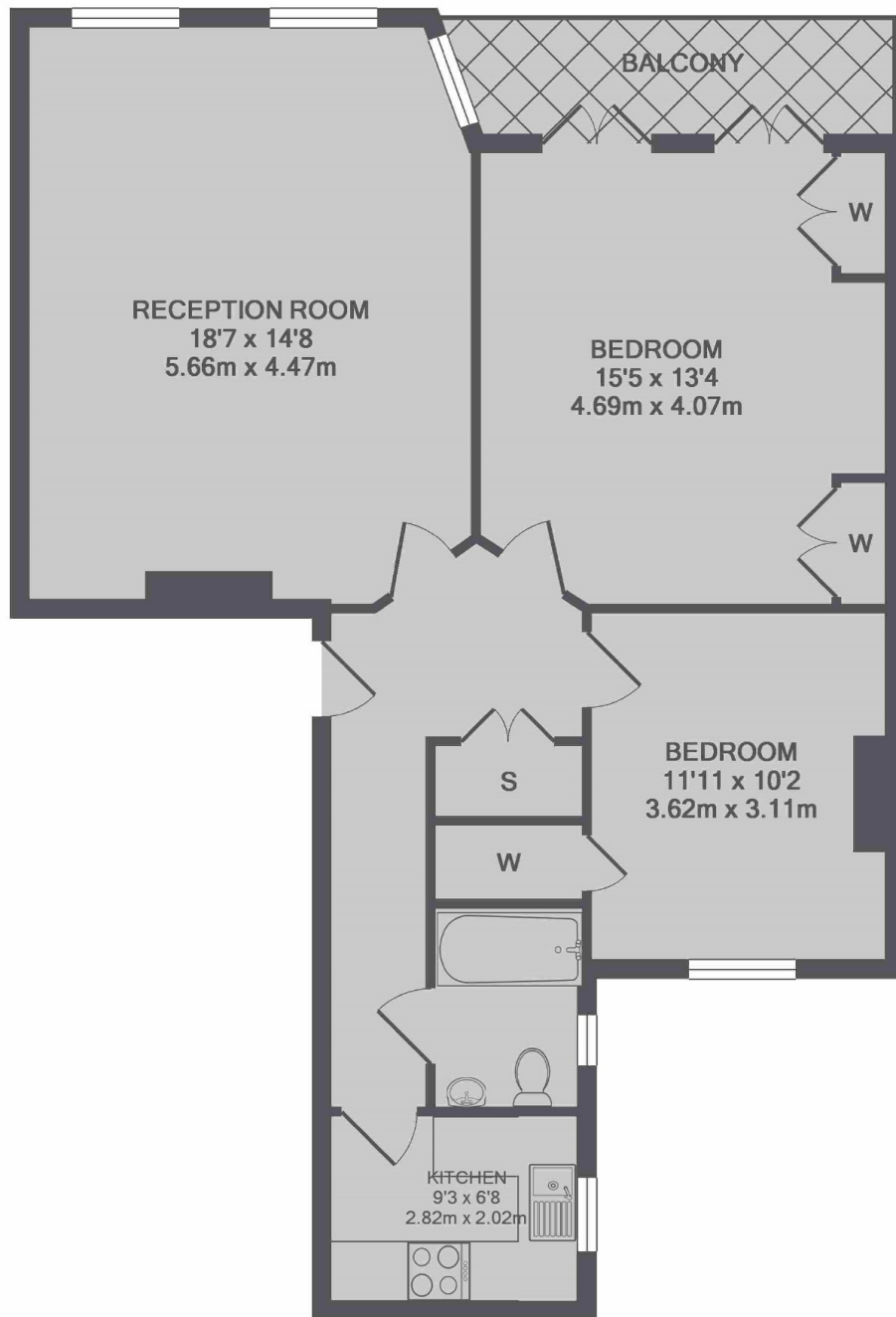
- Two Double Bedrooms
- Private Balcony
- Newly Refurbished
- Throughout
- Mansion Block
- Separate Kitchen
- Gloucester Road Station



Drayton Gardens, SW10



Drayton Gardens, London, SW10



TOTAL APPROX. FLOOR AREA 834 SQ.FT. (77.4 SQ.M.)