



Ennismore Gardens, SW7

£1,195 Per week

A great three bedroom flat to rent in one of South Kensington's prime locations. The property has two private terraces, is set over two floors and a lot of natural light.

Ennismore Gardens is a tranquil, private, residents-only square located in Knightsbridge with easy access to South Kensington and Hyde Park. Imperial College is located on Exhibition Road and Harrods on Brompton Road, both are an easy walk from the property. Nearest underground stations are situated at Knightsbridge and South Kensington.

Features

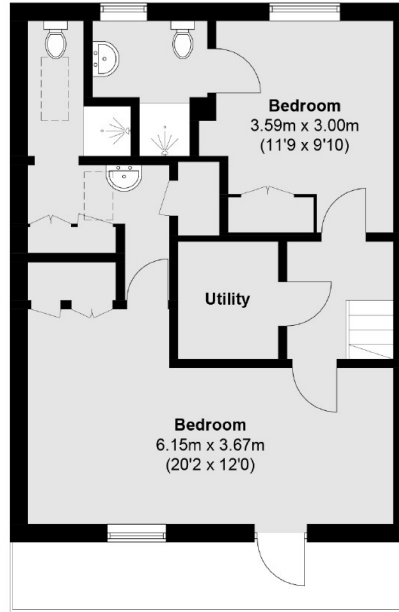
- Three Bedrooms
- Three Bathrooms
- Two Private Terraces
- Wood Floors
- Split Level
- Excellent Location



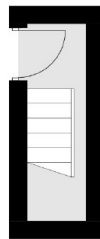
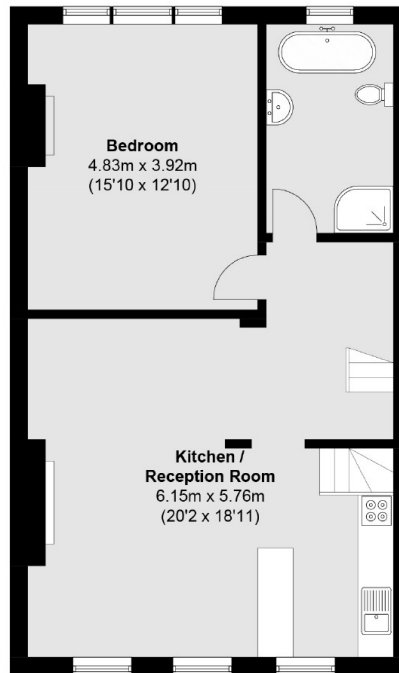
Ennismore Gardens, SW7



Ennismore Gardens, London, SW7



Fourth Floor



Second Floor

Third Floor

Total area (approx.): 121.9 sq. m (1,311.5 sq. ft)
External Area : 7.7 sq. m (82.8 sq. ft)