



Cromwell Road, SW5

£1,250,000

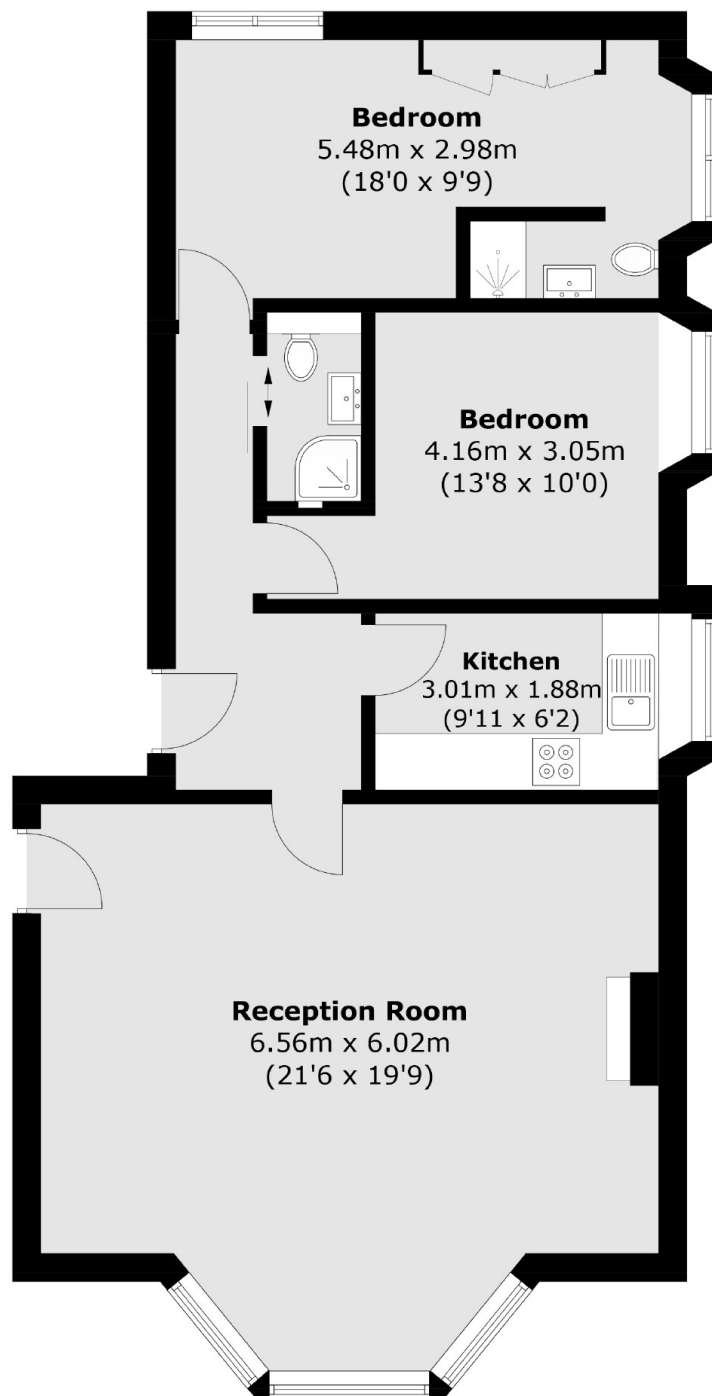
A stunning two double bedroom apartment situated on the ground floor of a charming Victorian period building. This beautiful home boasts soaring high ceilings throughout, creating a sense of grandeur and space. The property features a bright and airy reception room, perfect for relaxing or entertaining, along with a separate, fully equipped kitchen. Both generously sized double bedrooms offer ample room alongside an en-suite to the principal room.

Cromwell Road is ideally located between South Kensington and Kensington, the property is walking distance of Earls/ Gloucester road tube stations alongside local amenities.

Features

- Two Double Bedrooms
- Two Bathrooms
- Gloucester Road Station
- Large Reception
- Separate Kitchen
- High Ceilings

Cromwell Road, London, SW5



Total area (approx.): 77.3 sq. m (832.0 sq. ft)