



Courtfield Gardens, SW5

£695,000

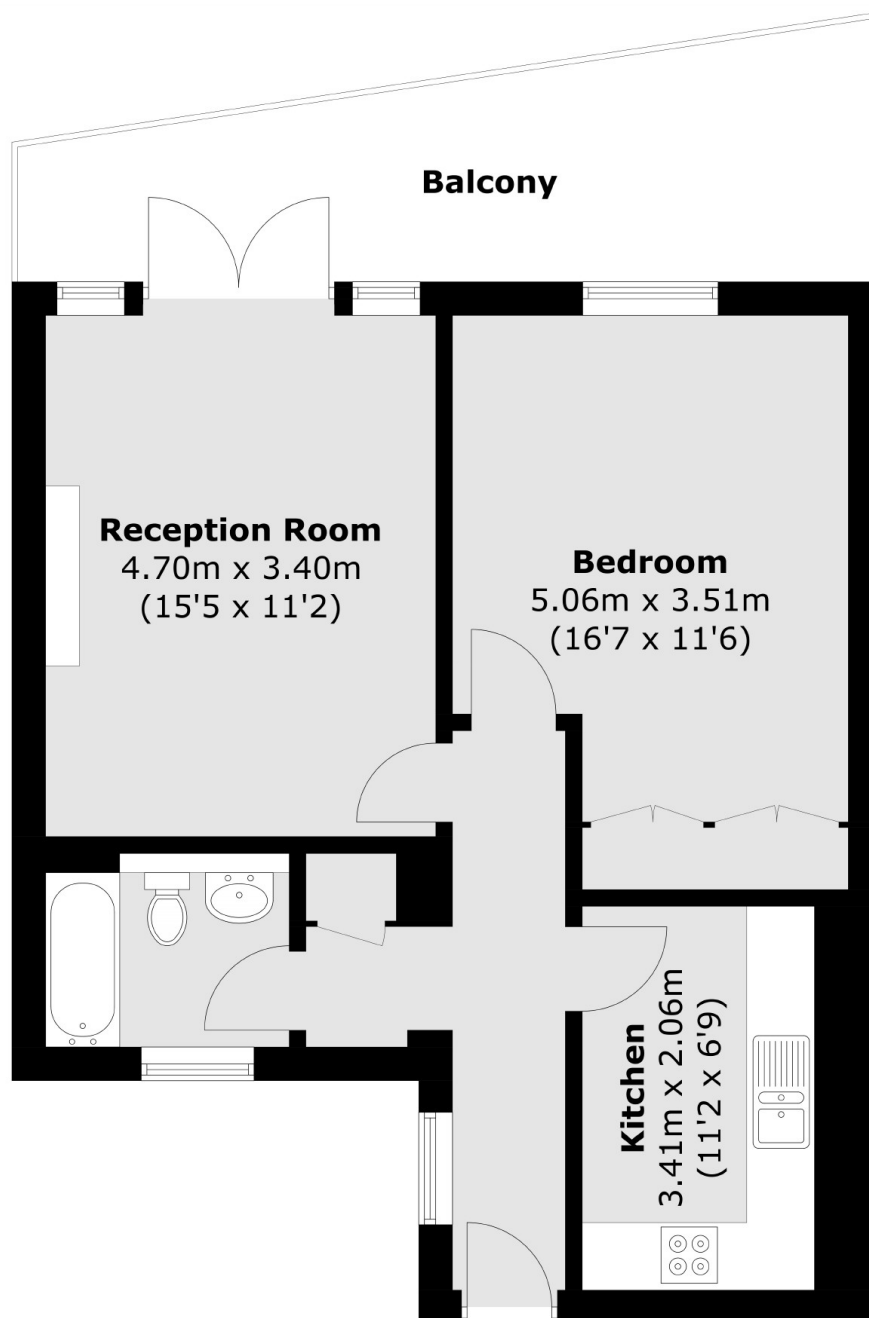
A beautifully appointed, bright and spacious one bedroom apartment in a well-maintained white stucco-fronted Victorian building on a prime residential garden square in SW5. Benefitting from an exceptional finish throughout this apartment further benefits from air-conditioning throughout and a private patio area.

Courtfield Gardens is close to Gloucester Road with a wide choice of cafes, shops and restaurants including a Waitrose supermarket. The nearest underground station is Gloucester Road.

Features

- Private Garden
- Spacious Apartment
- Close Walk to Amenities and Station
- Exceptional Finish
- Concierge
- Air Conditioning

Courtfield Gardens, London, SW5



Total area (approx.): 54.2 sq. m (583.4 sq. ft)
(Balcony): 13.5 sq. m (145.3 sq. ft)