

Kensington Court, W8

£1,250,000

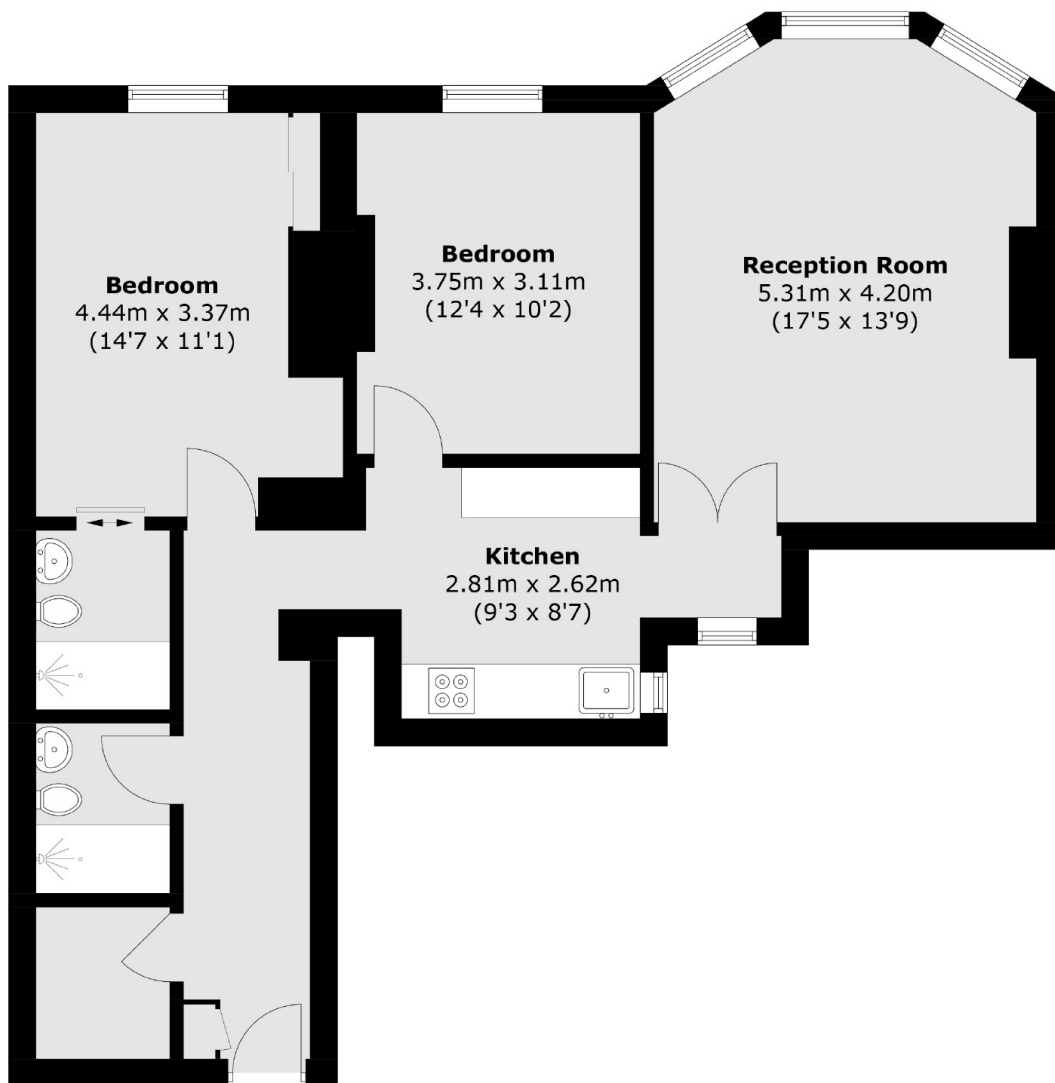
A spacious lateral apartment in a beautiful red brick building, this flat offers the perfect blend of elegance and comfort. With two large bedrooms and two modern bathrooms, it is designed for those seeking both style and practicality. The high ceilings and generously sized rooms provide an airy, light-filled atmosphere, making it particularly appealing to young families or professionals.

Kensington Court is within a few minutes walk from a wide range of shops and restaurants on Kensington High Street, Kensington Palace and the green open spaces of Kensington Gardens.

Features

- Two Bedrooms
- Two Bathrooms
- Wooden Floors
- On Site Porter
- Kensington High Street Station

Kensington Court, London, W8



Total area (approx.): 77.9 sq. m (838.5sq. ft)