



Elvaston Place, SW7

£750 Per week

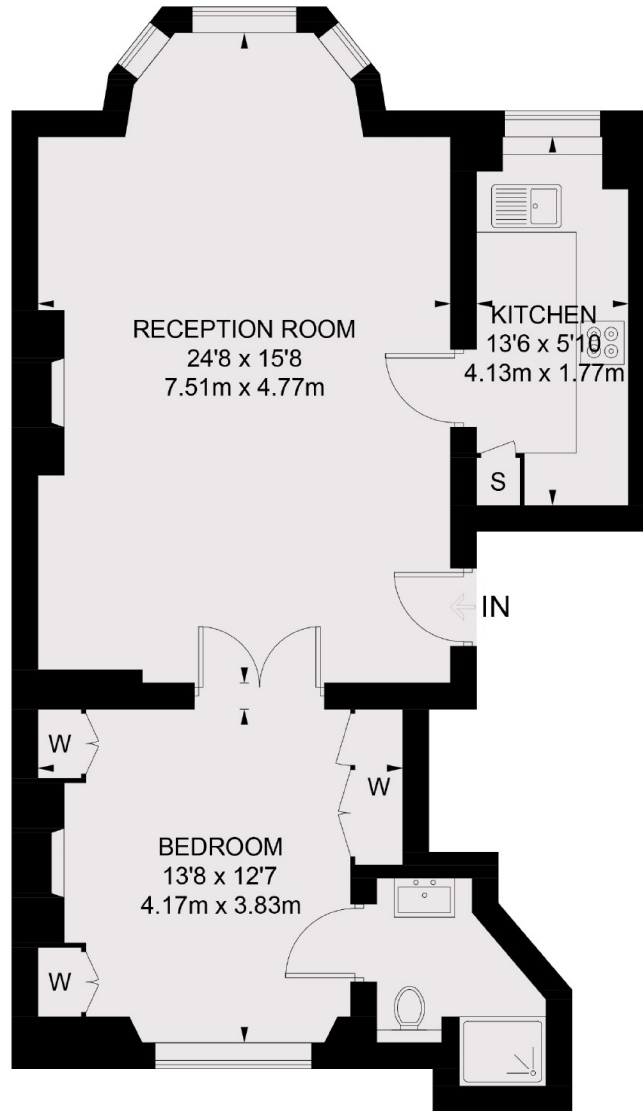
A fantastic one bedroom apartment on one of the best streets in South Kensington. The property is perfect for a couple or a single individual looking to be in the heart of South Kensington.

Elvaston Place is a beautiful residential street situated within a mile of the unique range of boutiques, bars and restaurants on Gloucester Road and close to the green open space of Hyde Park.

Features

- One Bedroom
- Newly Renovated
- High Ceilings
- Wood Floors
- Modern Appliances
- In-Built Storage

Elvaston Place,
London, SW7



RAISED GROUND FLOOR

TOTAL APPROX. FLOOR AREA 666 SQ. FT. (61.9 SQ. M.)