



## Kempsford Gardens, SW5

£500,000

A beautifully finished one bedroom apartment located a short walk away from local amenities and two tube stations with accessible links across London. Offered with no ongoing chain this is the perfect opportunity for a first time purchase or buy to let investment.

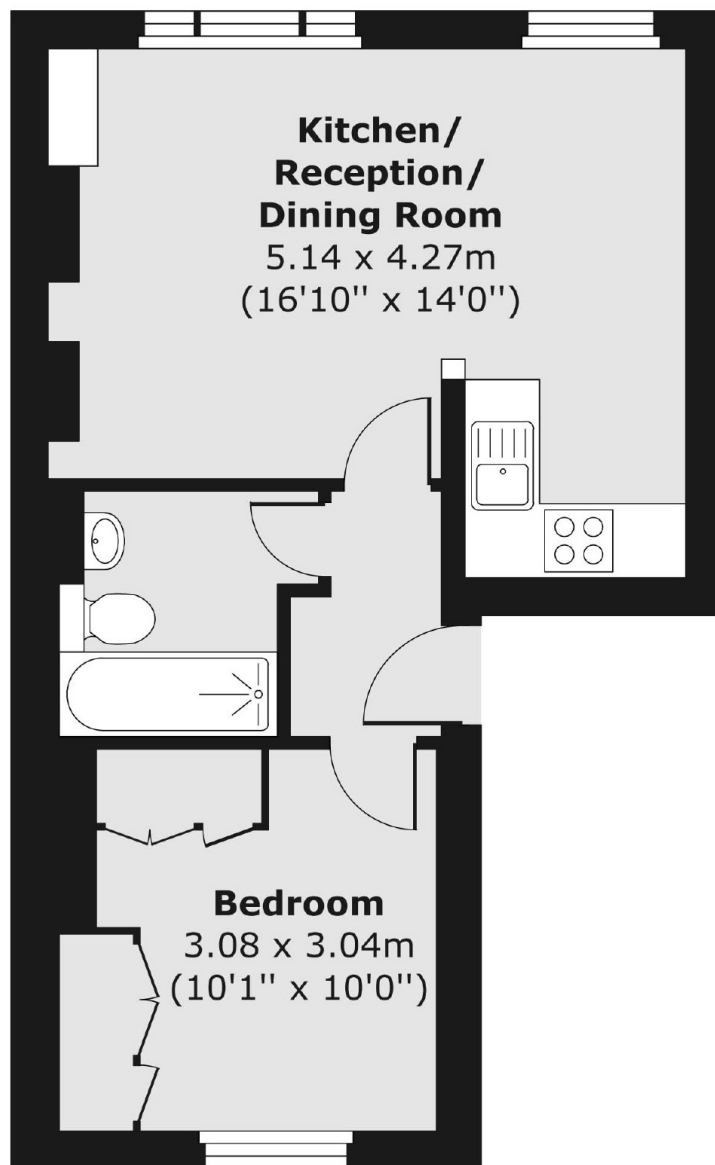
Kempsford Gardens is an attractive and conveniently located tree-lined crescent, located just off Old Brompton Road and close to Earls Court and West Brompton stations, with easy access to the A4/M4.

### Features

- One Bedroom Flat
- Second Floor
- Wood Floor
- Open Plan Kitchen
- Modern Bathroom
- Excellent Location
- Share Of Freehold

# Kempsford Gardens, London, SW5

## Second Floor



Total area (approx.) 35.49 sq. m (382 sq. ft)