

Ennismore Gardens Mews, SW7

£1,750 Per week

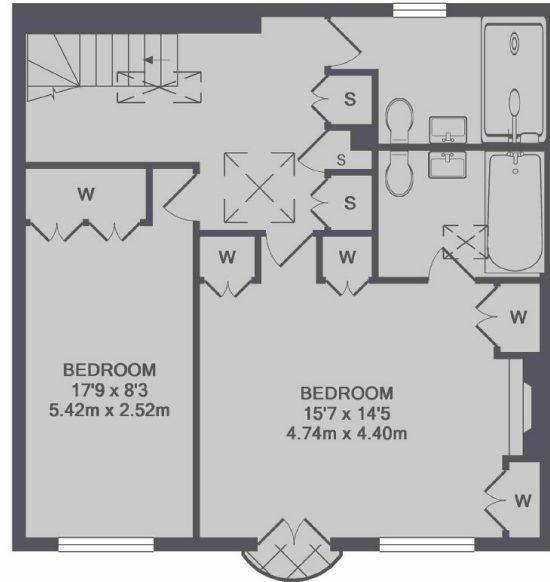
A beautifully renovated three double bedroom mews house located on a cobbled mews and within a mile of Hyde Park and the amenities of South Kensington and Knightsbridge.

Located close to Knightsbridge including Harrods department store, Marks and Spencer simply foods and all the exclusive restaurants and boutiques in Knightsbridge. Knightsbridge is the nearest underground station.

Features

Three/Four Double Bedrooms
Double Fronted Mews House
Wooden Flooring
Second Reception/Media Room
Excellent Location

Ennismore Gardens Mews, London, SW7



1ST FLOOR



LOWER GROUND FLOOR



GROUND FLOOR

TOTAL APPROX. FLOOR AREA 1823 SQ.FT. (169.4 SQ.M.)